

OEC Elite MiniView™

Changing the mini C-arm experience



OEC Elite MiniView



With the world's largest installed base of mobile C-arms, GE Healthcare understands the daily experiences of extremity surgeons and designed the OEC Elite MiniView to eliminate the frustrations that affect your workflow, your comfort, and your control.

**THE OEC ELITE MINIVIEW IS CHANGING THE
MINI C-ARM EXPERIENCE WITH:**

- Lightweight carbon fiber C-arm for easy maneuverability.
- SmartLock one button touch locks four joints and eliminates the frustration of drift.
- High display resolution images.
- Smart Metal to optimize image quality when metal is in the X-ray field.
- Simultaneously view full-size primary and reference images.
- CMOS flat panel detector with 2x greater spatial resolution.*
- Convenient low dose and imaging controls.



* (lp/mm), as determined by engineering testing for Normal and Mag modes using ABS.

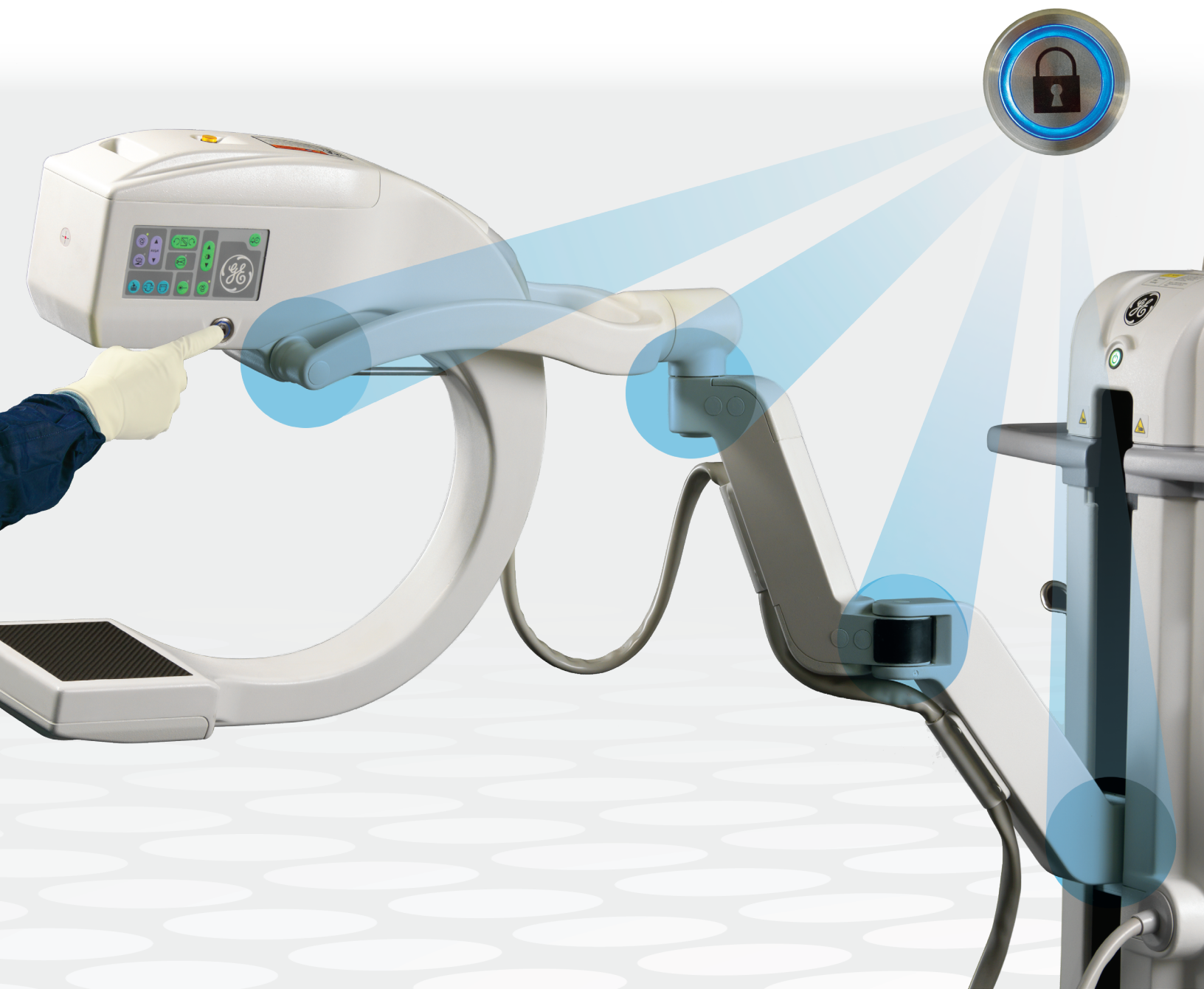
OEC Elite MiniView SmartLock System

Joints lock and eliminate drift concerns with the touch of one button

SIMPLIFIED DESIGN.

CONVENIENT OPERATION.

By eliminating complicated locking levers and dials for each joint, MiniView eases positioning and streamlines your workflow. Rather than moving and locking each arm segment one at a time, you guide and lock the arm system in one synchronized movement. It's fast, simple, and convenient. For safety and ease of operation, the system allows for manual override and disengages as you power down for transport.



Manage your C-arm single handedly with speed and ease



120 degrees of
orbital movement

380 degrees of
lateral rotation

33" (85 cm) vertical travel range
16" (41 cm) low to 50" (127 cm)

EASY MANEUVERABILITY AND POSITIONING

Unlike traditional rear capture mini C-arms, MiniView is designed around an orbital rotational access point leveraging gravity rather than competing against it. Combining an orbital rotation sleeve with a counterbalanced vertical slider enables smooth, fluid movements and reduces natural drift. You achieve optimal positioning quickly switching easily from AP to lateral and axial views, which can help drive your procedural efficiency and a better C-arm experience.

LIGHTWEIGHT, LESS FORCE REQUIRED FOR POSITIONING

The MiniView's carbon fiber C and balanced design cut the C-arm weight by >30%*, reducing the force necessary to position around anatomy and to maneuver in and out of the surgical field.

ELIMINATE THE FRUSTRATION OF DRIFT

The MiniView C-arm's natural balance resists drift to stay where you put it. The SmartLock system gives you an extra level of confidence with just a single touch. One electric button secures the four key joints: orbital, upper, lower and vertical slider.

ADMIN FUNCTION CONTROLS OUTSIDE THE STERILE FIELD

With MiniView, all administrative function controls are outside the sterile field. Only the surgical necessities are on the front plane, reducing the risk of sterile field breaches and resulting delays.

*Compared to OEC 6800 mini C-arm

Full Size, High Resolution Images

LARGE PRIMARY AND REFERENCE IMAGES

MiniView provides dual 19" (48 cm) monitors that enable you to view full-size primary and reference images simultaneously. With 11.4" (29 cm) images, MiniView displays the large primary and reference images. See detailed, full-sized dual images without straining.

CIRCULAR FIELD OF VIEW

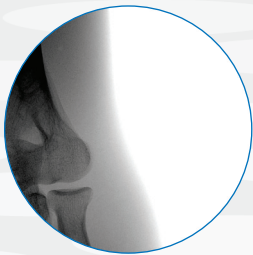
MiniView's circular FOV allows you to focus on the most clinically relevant anatomy while reducing the area exposed to potentially unneeded dose.

EASILY ACCESSIBLE LOW DOSE MODE

From the tube head control panel, the user can select low dose mode which provides a similar high-resolution image to normal mode but at approximately half the mA, reducing dose for both the patient and clinician.

CONVENIENT AUTOTRACKING

In situations where the anatomy may be off-center, MiniView automatically seeks the subject anatomy anywhere within the imaging field and selects the optimum imaging technique.



Without Autotracking



With Autotracking



SHARP DETAIL IN HIGH RESOLUTION

MiniView has a high resolution flat panel and is designed to allow visualization of fine bony detail such as hairline fractures and trabecular patterns:

- Less down-sampling of acquired data
- Small focal spot (0.033 mm)

SMART METAL PRESERVES ANATOMIC DETAIL

Smart Metal optimizes image quality even with the introduction of metal objects into the X-ray field. No manual brightness or contrast adjustments are needed.





CMOS Flat Detector Technology: Optimizing Image Quality and Dose

2X GREATER SPATIAL RESOLUTION

Not only is CMOS flat detector (CFD) technology more efficient at turning X-ray energy into a digital image than conventional image intensifier technology, the MiniView CFD has 2x greater spatial resolution* than the traditional image intensifier based mini C-arm.

UNIFORM IMAGE FREE OF GEOMETRIC DISTORTION

With no optics, the CFD detector converts the X-ray energy into an image that has:

- No geometric distortion or curving at detector edges, even in the presence of devices with magnetic fields.
- No inherent vignetting: the data at detector edges are not artificially darkened.

SMALLER, THINNER PROFILE, EASIER TO POSITION

With less bulk to manage than with an image intensifier, the slim profile MiniView CFD positions easily, improving access to anatomy in complex procedures and enhancing procedural ergonomics.

* (lp/mm), as determined by engineering testing for Normal and Mag modes using ABS.

Dedicated Service Support



Dependable performance helps maintain surgical schedules and meet patient expectations of on-time treatment. As a global leader in surgical imaging, GE Healthcare can provide quick, reliable service with a large support team, 24/7 support, service training, and overnight parts delivery.*



LARGEST SUPPORT TEAM

With the largest installed base of C-arms, GE has the largest C-arm service and dedicated support team in the world. C-arm specialists are at your service.



30-MINUTE RESPONSE TIME

When you have questions or service requirements, you can't afford to wait. That's why our call center guarantees Service customers* a response time of 30 minutes or less.



SERVICE SPECIALISTS NEARBY

On-site response within 6 hours by service engineers located within 50 miles of 85% of sites.



* Service offerings vary by contract and country

A better mini C-arm experience: It's in every detail of the OEC Elite MiniView

X-RAY "ON" BUTTON
ON TUBE HEAD

SMARTLOCK

LIGHT, BALANCED PIVOT C

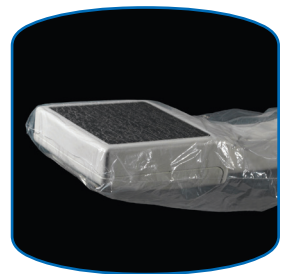
CMOS FLAT DETECTOR

Inspired by the goal of improving the experience you have with your mini C-arm, we focused MiniView's design on:

- **Ending positioning struggles**
- **Increasing imaging confidence**
- **Improving your independent control of the C-arm**

With fewer distractions and frustrations, you are free to focus on surgical procedures. A better experience with your mini C-arm just might lead to a better day in your OR.

CUSTOMIZED STERILE DRAPE
WITH CFD PLATE PROTECTOR



DUAL 19" MEDICAL
MONOCHROME LCD
WITH ANTI-GLARE PANELS

DUAL FULL-SIZE PRIMARY
AND REFERENCE IMAGES

TOUCHSCREEN
RIGHT MONITOR

FAMILIAR, BUT MODERNIZED USER
INTERFACE

LIGHT, COMPACT DESIGN
FOR TRANSPORT VISIBILITY

WATER RESISTANT
KEYBOARD

PRINTER STORAGE BAY

E-PORTS BAR W/ USB, DVI

WIRELESS DICOM*

WIRED OR WIRELESS FOOTSWITCH*

COUNTERBALANCED
VERTICAL SLIDER

SECURED & PROTECTED
TRANSIT POSITION



*Option may not be available in all countries.



Imagination at work

©2019 General Electric Company - All rights reserved.

General Electric Company reserves the right to make changes in specifications and features shown herein, or discontinue the product described at any time without notice or obligation. Contact your GE Representative for the most current information. GE, GE Monogram and OEC are trademarks of General Electric Company. GE OEC Medical Systems, Inc., doing business as GE Healthcare.

JB51081XX(1)