

# Interventional Cardiology Time for a [Re]vision

**Innova IGS 5**



## INNOVA IGS 5

### From X-ray to Image Guided Systems

It's time to rethink Interventional Cardiology imaging. GE is introducing Image Guided Systems, accurately reflecting the way you work – with increasingly diverse and complex procedures that require integration of powerful technologies.



The Innova\* IGS 5 helps answer your daily challenges in image quality, clinical confidence, efficient procedure time, dose and reliability.



# Performance imaging. At all times.

The Innova IGS 5 lets you leverage GE Healthcare's excellence in flat-panel imaging:

- Use the 21 cm x 21 cm flat-panel digital detector for approximately 30% more anatomical coverage than 17.7 cm square detectors.
- Get excellent performance in the low-dose fluoroscopy and record modes, with high Detective Quantum Efficiency (DQE).
- Obtain exceptional image quality, high reliability, advanced applications and dose management solutions: It all means you can trust your system to perform superbly in even the most complex cases.

Time for a [Re]vision

# Drive your procedure with clinical confidence

## Percutaneous Coronary Intervention

### Select the optimal angle with one injection



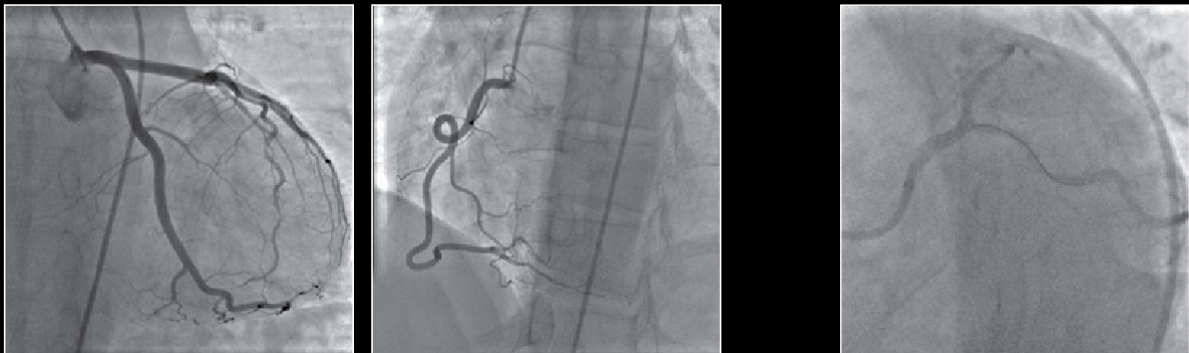
**InnovaSpin<sup>2</sup>** is a rotational angiography that provides many of the cardiac information you need, from over a maximum range of 200° angles, in one acquisition and with one injection.

### Analyze the vessel for device selection



**Innova OneTouch Stenosis Analysis<sup>2</sup>** simplifies lesion measurement thanks to auto-calibration and easy one-button activation at bedside.

### View the advancement and deployment of guidewires and devices

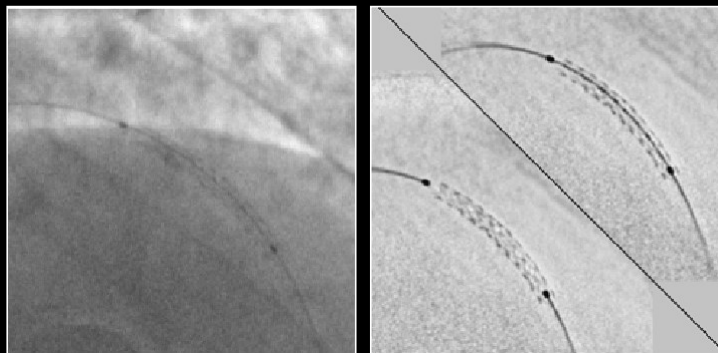


Record mode views

Low-dose fluoroscopy

Using **Fluorostore<sup>2</sup>**, the record mode can be replaced with **low-dose fluoroscopy** while delivering exceptional image quality.

### View and characterize the stent

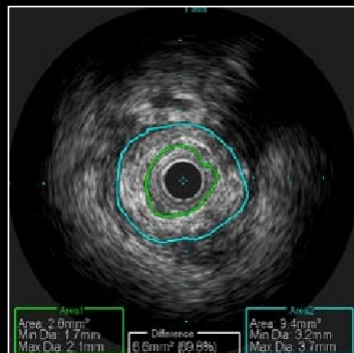


Acquired view

StentViz view

The subtracted guidewire view of **StentViz<sup>2</sup>** allows excellent visualization of the stent struts and borders within the stent.

### Check the intra-vessel lumen



The **InnovaSi-system** option provides complete integration of the IVUS solution from Volcano.<sup>2</sup>

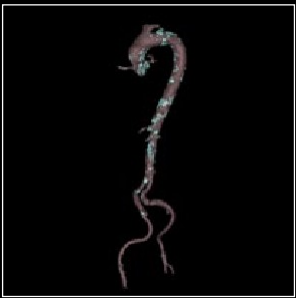
## Transcatheter Aortic Valve Replacement

### Understand the 3D aortic root anatomy



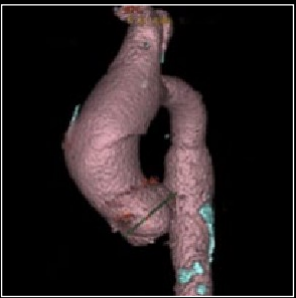
**Innova 3D<sup>2</sup>** images, provided by rotational angiography, allows measurements of the elliptical aortic root in the absence of CT.

### Confirm valve stenosis, vessel suitability and identify the access approach



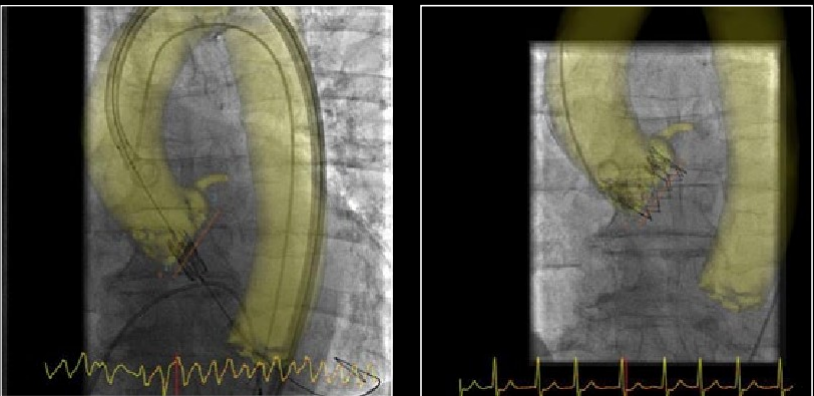
**Valve Assist (featuring Valve Planning protocol<sup>2</sup>)** provides vessel tortuosity, perimeter and calcifications from the iliacs to the aortic root (CT images).

### Select the appropriate valve and identify the valve plane



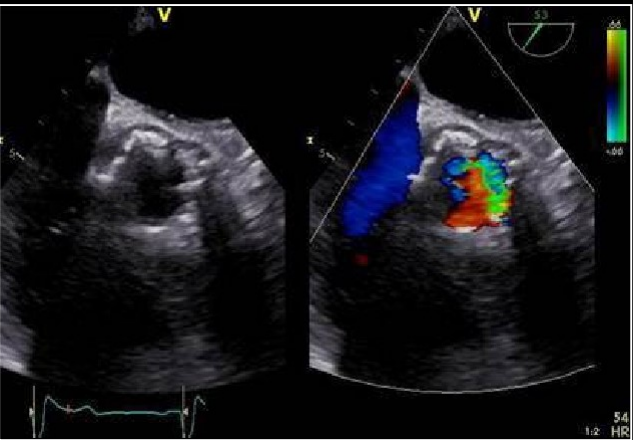
**Valve Assist (featuring Valve Planning protocol<sup>2</sup>)** allows you to size the aortic root annulus, essential for device selection. It also helps to identify valve plane orientation for successful deployment (CT images).

### Get accurate valve positioning and deployment



**Valve Assist (featuring Innova HeartVision<sup>1,2</sup>)** provides high precision for real-time guidance to assist valve positioning and deployment, while minimizing motion with ECG synchronization and Image Stabilization.

### Check procedure results and success



Both angiography and Ultrasound, including TTE, TEE and CardiolCE<sup>2</sup>, help control the device final positioning. In addition, Ultrasound could also be used in the previous steps of the procedure.

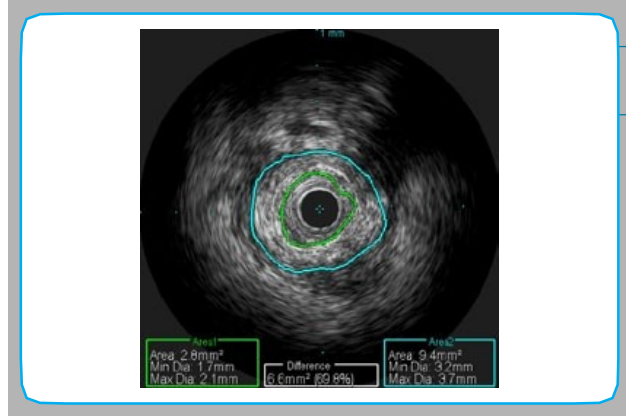


# Efficient procedure time



## *Powerful. Comfortable. Flexible.*

See information how, where and when you want it based on a large choice of predefined layouts. Optimize your workflow and choose from a wide range of interventional cardiology layouts at tableside.



## *Full integration of Volcano s5i.<sup>1,2</sup>*

IVUS and FFR functionalities of Volcano on the tableside touch screen control help provide more comfort and efficiency for the user with synchronization of the patient data.



## *Control at your fingertips.*

Easily access applications and dose protocols with the intuitive touch screen at tableside.



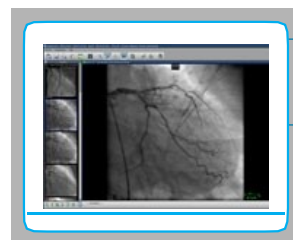
## *Move beyond integration to synchronization.*

Images, waveforms and data, brought together in real-time, to put the information you need at your fingertips when you need it.



## *Review images and plan treatments on the Innova with AW.*

Easily plan and monitor treatments on the Innova, and compare multiple 3D models with full processing and control at tableside.



## *Centricity Cardiology Enterprise Solution.*

A comprehensive cardiovascular IT solution offering clinical access to a more complete cardiovascular patient record with optimized workflow and improved revenue cycle management.

Optimal procedure length is only as long as needed. The appropriate length for a procedure is the minimum time spent in the Cath Lab to create a positive patient outcome. Enhanced workflow lets you focus on the patient – not the technology.



# Excellence in Dose Management

## **DoseSense**

*The right image at the right dose.*

The IGS 52 features DoseSense, a comprehensive set of dose management tools that further extend dose efficiency.<sup>3</sup>

- Personalize and select your dose settings at tableside to achieve the IQ/Dose balance that fits your procedure needs.
- Keep image quality and dose at optimum levels with GE Healthcare's exclusive AutoEX, adapting on the fly the dose for each operator and procedure.
- Use InnovaSense with its intelligent detector to recognize patient contouring and optimize positioning.

Time for a **[Re]vision**

© 2012 General Electric Company – All rights reserved.

General Electric Company reserves the right to make changes in specifications and features shown herein, or discontinue the product described at any time without notice or obligation. Contact your GE Representative for the most current information.

GE and GE Monogram are trademarks of General Electric Company.

A General Electric Company, doing business as GE Healthcare.

\* Trademark of General Electric Company.

\*\* Volcano is a trademark of Volcano Corporation. Volcano sSi is a platform developed by Volcano Corporation and is required for Integrated Innova – sSi system option functionality.

\*\*\* Edwards Sapien is a trademark of Edwards Lifesciences Corporation

<sup>1</sup> Cannot be marketed (including advertising and promotions) in countries where market authorization is required and not yet obtained. Refer to your sales representative.

<sup>2</sup> Offered as an option

<sup>3</sup> The dose efficiency may vary depending on the clinical task, patient size, anatomical location and clinical practice.

France

Paris

Fax: +33 (0) 1 30 70 94 35

Japan

Tokyo

Fax: + 81-3-3223-8524

Singapore

Fax: +65 62917006

USA

Milwaukee

Fax: + 1-262-521-6123

## About GE Healthcare

GE Healthcare provides transformational medical technologies and services that are shaping a new age of patient care. Our broad expertise in medical imaging and information technologies, medical diagnostics, patient monitoring systems, drug discovery, biopharmaceutical manufacturing technologies, performance improvement and performance solutions services help our customers to deliver better care to more people around the world at a lower cost. In addition, we partner with healthcare leaders, striving to leverage the global policy change necessary to implement a successful shift to sustainable healthcare systems.

Our “healthymagination” vision for the future invites the world to join us on our journey as we continuously develop innovations focused on reducing costs, increasing access and improving quality around the world. Headquartered in the United Kingdom, GE Healthcare is a unit of General Electric Company (NYSE: GE). Worldwide, GE Healthcare employees are committed to serving healthcare professionals and their patients in more than 100 countries. For more information about GE Healthcare, visit our website at [www.gehealthcare.com](http://www.gehealthcare.com).

GE Healthcare  
Chalfont St.Giles,  
Buckinghamshire,  
UK



GE imagination at work