



Versana Premier™

Care with Confidence









Introducing Versana Premier

Powerful. Versatile. Productive.
World-class ultrasound designed for peace of mind.

The Versana Premier ultrasound system can help you quickly and confidently diagnose a broad range of conditions, case after case, day after busy day.

A wide variety of probes and clinical features let you perform and analyze exams from routine to highly specialized:

Abdominal OB/GYN Cardiac Urological Vascular Musculoskeletal

-  World-class imaging
-  Smart clinical features
-  Intelligent automated productivity tools
-  Clinical and product education[†]
-  Expert service and technical support
-  Flexible financing options
-  Access to a network of Versana users

+ Versana Premier

is part of the Versana ultrasound family: complete solutions that help empower care without compromise, balancing capability, affordability, and reliability.



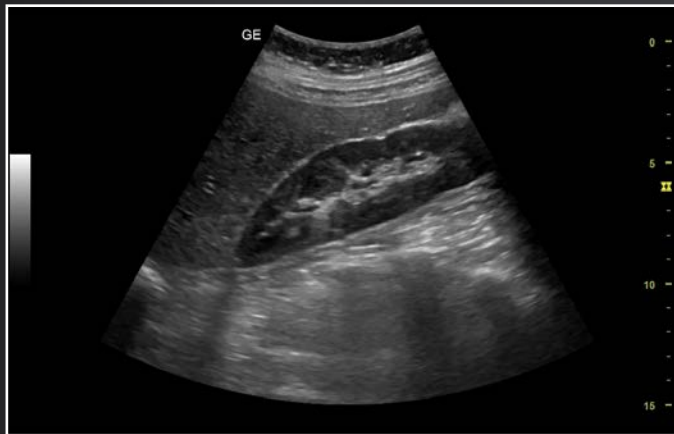


A partner you can trust

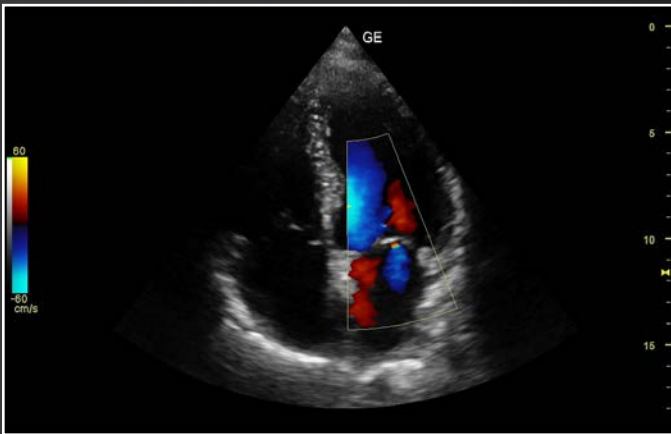
Take your department or practice to new levels of excellence

+ World-class imaging technology

Versana Premier delivers outstanding imaging power and clarity to boost diagnostic confidence. It helps you see clearly, differentiate between tissues, and delineate structure boundaries. You'll enjoy proven functionalities found on most advanced GE systems.



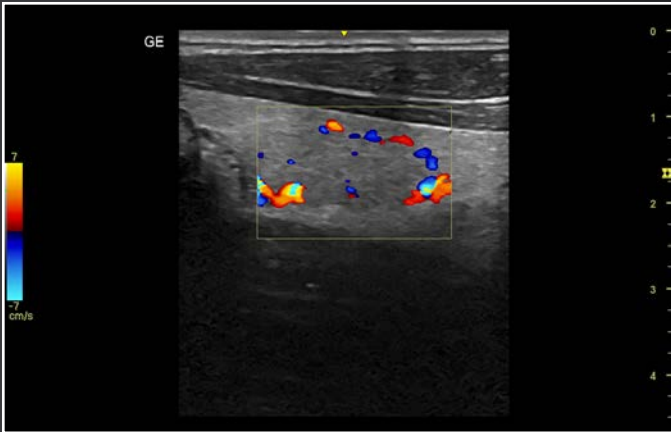
CrossXBeam™ and SRI-HD to define structure borders clearly.



Color Doppler optimized to evaluate cardiac, venous, and arterial conditions.



B-Flow™ color imaging to analyze blood flow.



Sensitive color Doppler to examine thyroid vasculature and blood flow in vessels.

Versana Premier. Powerful. Versatile. Productive.

+ Comprehensive service and support for peace of mind

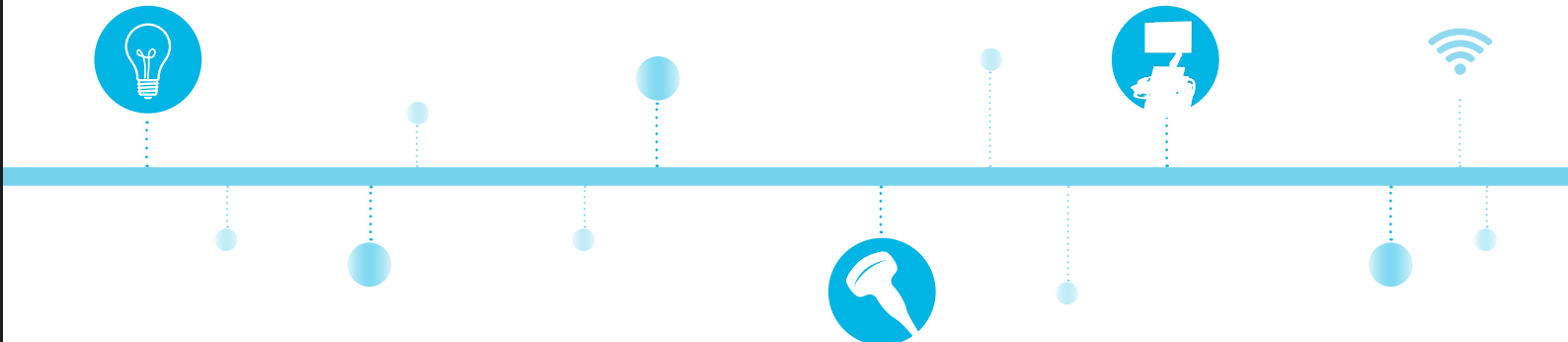
GE delivers flexible, worry-free, multi-year coverage. It's your assurance of long life, high uptime, maximum patient volume, and strong return on investment.

- Expert service engineers always close by
- Simple maintenance; easy troubleshooting and repair
- InSite™ service technology† for fast remote diagnostics and repairs



+ Decades of GE Healthcare heritage at your service

Invest in Versana Premier and benefit from vast GE ultrasound expertise. It's designed with you, your practice, and your patients in mind to meet your clinical, workflow and connectivity needs.



A complete solution

Advanced capability, clinical education, and financing to fit your budget

+ Versatile system, simple to use

Multiple exam protocols and applications help you diagnose a wide spectrum of patient conditions. Intuitive automated tools streamline workflow.



Use **Scan Assistant** to create standardized exam protocols, saving keystrokes, reducing stress and fatigue, and maximizing exam consistency



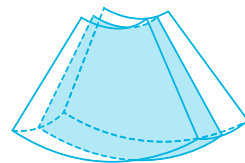
Use **Whizz** dynamic image tuning continuously optimizes the image as you scan, even as you move from one organ or area to another



Use **Tomographic Ultrasound Imaging (TUI)** to assess slices within a volume



Use **TruScan** to review and analyze images after exams at your convenience



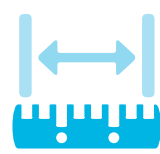
Use **3D volume** imaging for rich anatomical views



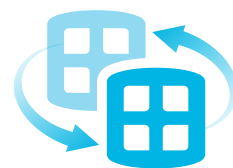
Overlay **voice comments** on images for playback when reviewing exams



Capture standard pre- and post-stress cardiac views with **Stress Echo**



Use **Automated measurements** of bladder volume, IMT thickness, left ventricular ejection fraction, fetal characteristics and more



Compare current and prior exams side-by-side with the **Follow-Up Tool**



Use **elastography** to evaluate the stiffness of tissue and underlying structures



Network options let use the cloud¹ to share images with referring physicians²



Flexible financing choices to enhance return on investment

Financing plans³ including monthly payments help you meet your financial goals and grow your practice.

+ Ergonomic features for clinician and patient comfort*

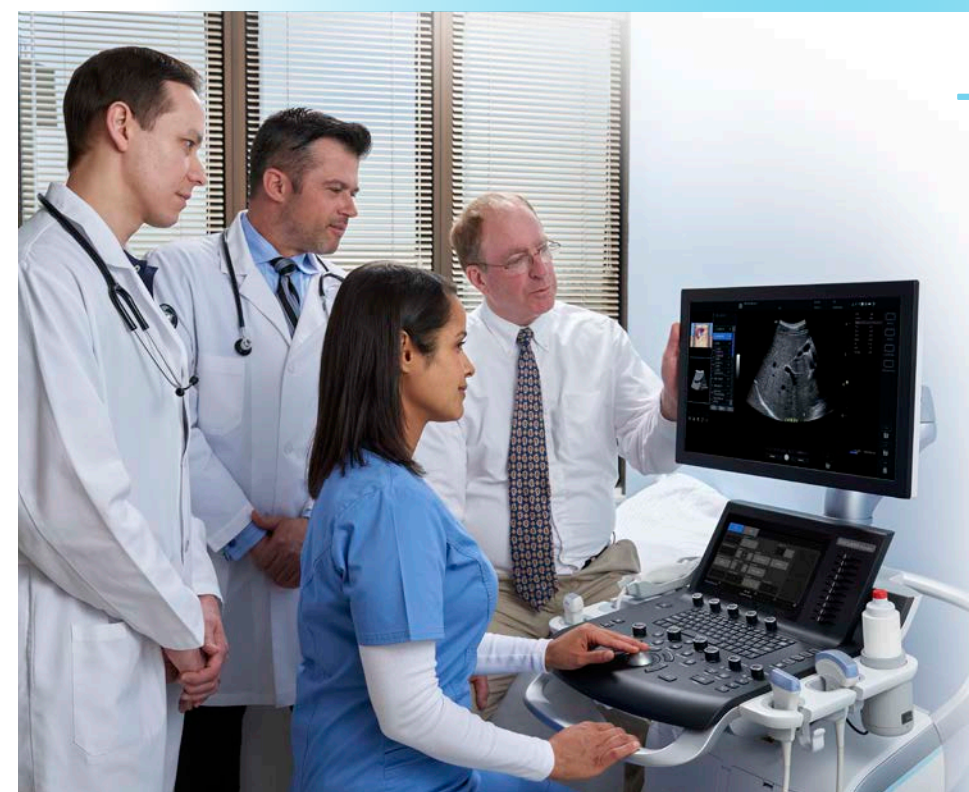


Versana Premier. Powerful. Versatile. Productive.

+ Sharpen your skills and stay ahead of the curve

- Scan Coach: 3D animation, anatomic illustrations and reference images
- My Trainer: on-board help with system care, setup and operation
- Web-based product and clinical tutorials
- Local face-to-face training and remote application support[†]

* Optional features which may vary from country to country





An opportunity for growth

Ultrasound to serve you well today and set your course for the future.

+ Experience the strength of the GE Healthcare family

Your support team is fully trained & GE Healthcare qualified, deeply experienced, and close by.

- Expert support during and after purchase
- In-depth product instruction
- Remote or on-site technical, clinical and network support

+ Customized solutions and path to growth

Help your practice grow with Versana Premier. You can select a basic package, with the option to add more probes and software. Or let GE experts help select another system to suit your needs.

+ Versana Club: Learn. Network. Share.

The Versana Club gives you access to member resources members that can help expand your ultrasound knowledge and improve your practice. It's a place to share images with your peers from around the world.

You'll also enjoy:

- Educational offerings
- Web-based video tutorials
- Information on Versana family service solutions and products
- Up-to-date content on ultrasound and patient care
- Notices of regional ultrasound events and other news
- Access to the broader family of GE ultrasound user clubs



Versana Premier. Care with Confidence.

Powerful. Versatile. Productive. World-class ultrasound designed for peace-of-mind.

Powerful. Versatile. Productive.

Versana Premier brings broad imaging capabilities and efficient workflow to suit multiple clinical settings and specialties. We offer the following probes **4C-RS, L6-12-RS, 12L-RS, e8C-RS, e8Cs-RS, 8C-RS, 3Sc-RS, 6S-RS, 12S-RS, L8-18i-RS, RAB 2-6-RS, BE9CS-RS** and **LK760-RS** to cover a wide range of applications:



Radiology



General practice



OB/GYN



Urology



Breast care



Musculoskeletal



Outpatient imaging centers



Pediatric



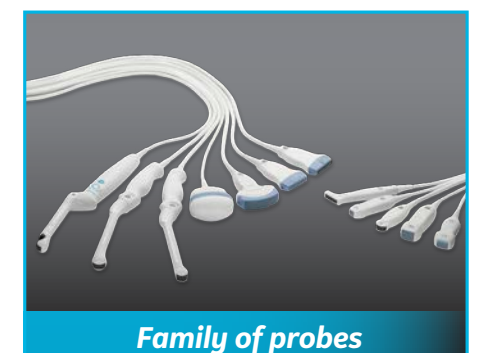
In vitro fertilization centers



Family planning centers



Cardiology



Family of probes

Image gallery



Fetal echo.



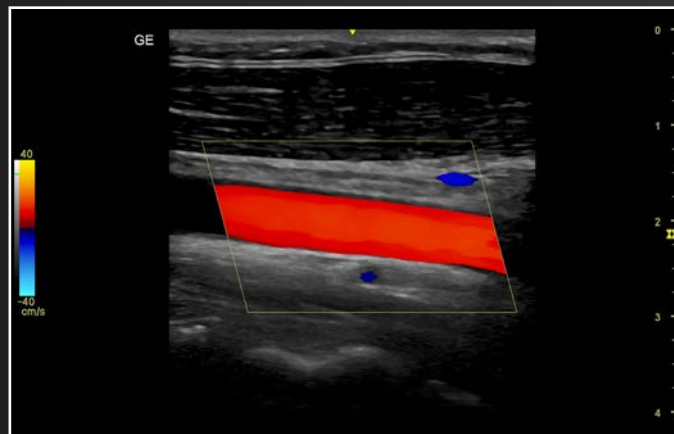
Liver with color Doppler.



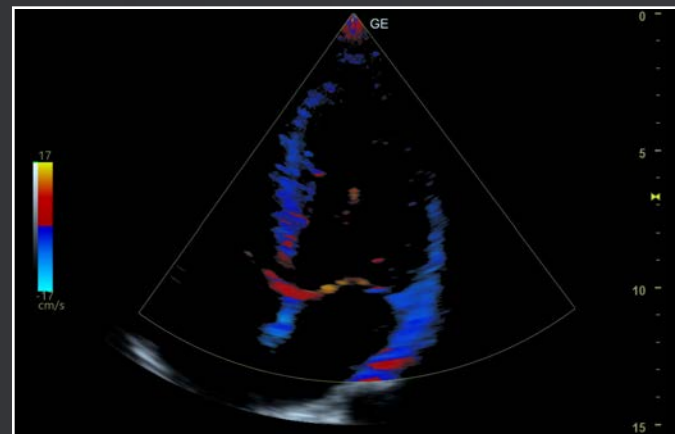
Static 3D fetal profile.



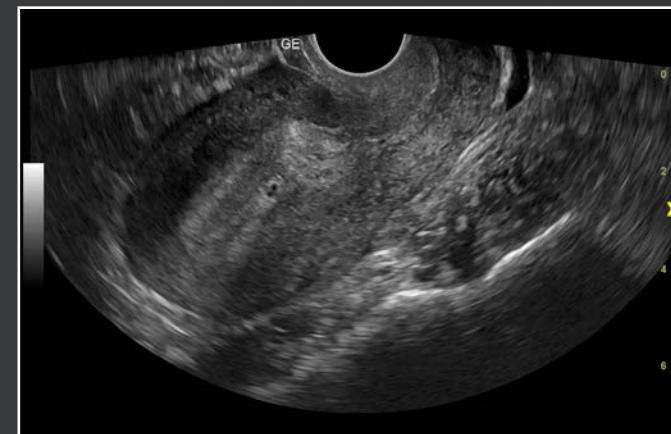
Hepatorenal space.



Carotid with color Doppler.



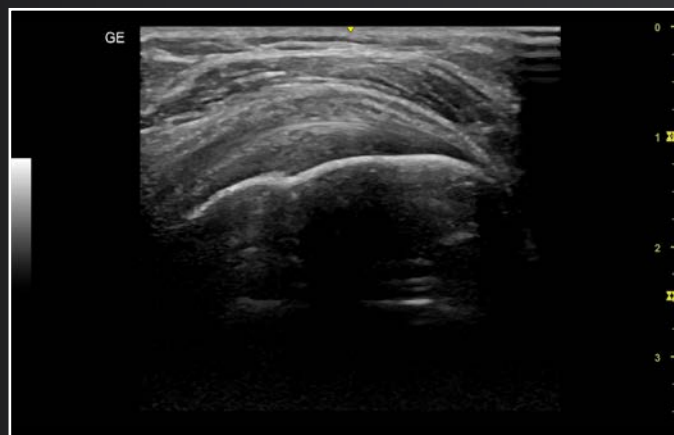
Apical imaging with tissue velocity imaging.



Uterus.



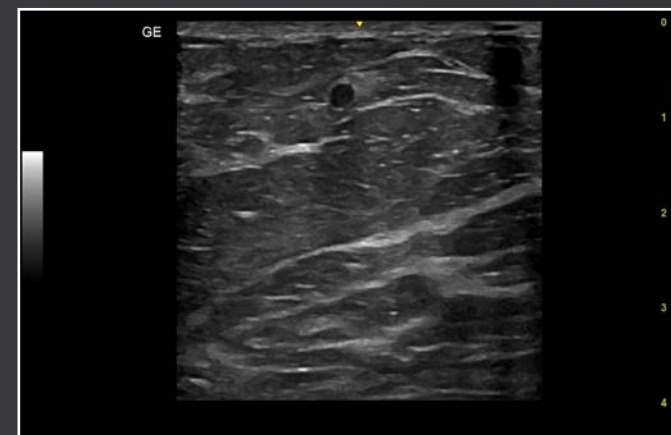
Prostate imaging.



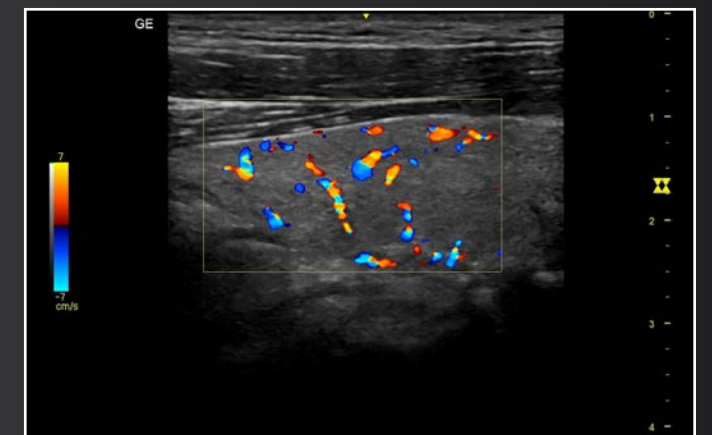
Shoulder.



Abdominal aorta.



Breast imaging.



Thyroid with color Doppler.



[†] Local educational offerings may vary according to regions. Please check with your local GE representative.

* Option may not be available in all countries.

¹ Requires internet connection; may not be available in all countries.

² Image sharing to mobile devices via Bluetooth available in some countries

³ Financing options vary from country to country. Please check with your local GE representative.

Products mentioned in this material may be subject to government regulation and may not be available in all countries. Please check with your local Sales Representative. Shipment and the effective sale in certain countries can only occur if the product is approved. Final product configuration and features may differ from the ones represented here and may not be available in every country. Check with your local GE representative for details.

Imagination at work

© 2018 General Electric Company - All rights reserved.

GE Healthcare reserves the right to make changes in specifications and features shown herein, or discontinue the product described at any time without notice or obligation. Contact your GE Healthcare representative for the most current information. GE, GE Monogram, Versana Premier, InSite, CrossXBeam and B-Flow are trademarks of General Electric Company. GE Healthcare, a division of General Electric Company. GE Medical Systems, Inc., doing business as GE Healthcare.

JB59807XX