



# Vivid™ T8

Patient Care. Elevated.



[gehealthcare.com](http://gehealthcare.com)

The Vivid™ T8, ideally designed for cardiovascular practices and Shared Services, combines the established, intelligent cardiac imaging capabilities of GE Vivid systems with exceptional shared services performance of the LOGIQ™ systems.

The result is a truly hybrid cardiovascular ultrasound system that is rugged, reliable, robust, fully-featured, yet still affordable and convenient to use.

And, with three years of comprehensive service coverage, the Vivid T8 system is designed to help enhance the total value of ownership.



## Take rugged reliability to challenging conditions.<sup>1</sup>

Reliability was the number one priority in developing the Vivid T8. The system was designed and rigorously tested to provide a hardy robustness and reliability even in very harsh, demanding environments.

- **Rugged construction for durable performance** proven through 20 hours of intense vibration testing and shock testing with 1,000 strikes at a force of 10 Gs.
- **Broad thermal range** verified via rigorous thermal testing in both intense heat and cold and cycling back and forth between two temperature extremes.
- **Excellent performance** even with both fans clogged with large amounts of dust.

## Scan with convenience.

The Vivid T8 is designed to be easy to operate and transport in many environments. Its intuitive user interface is a true Vivid console, with Vivid applications, features, workflow, and reliability, simplified for ease of use.

- **Intuitive control layout** includes the 10.1" multi-touch screen, rotary dials, patient management buttons and all Mode buttons conveniently grouped together near the trackball.
- **Ready-to-go mobility** – thanks to the light, 60-kilogram (132 pounds) weight, durable casters, and push handles front and back, the Vivid T8 is easy to push and roll on tiled or carpeted floors.
- **Ample transducer capacity** provides four RS transducer ports and four standard transducer holders, plus two optional ones.

## Leverage Vivid cardiac Image Quality and functionality.

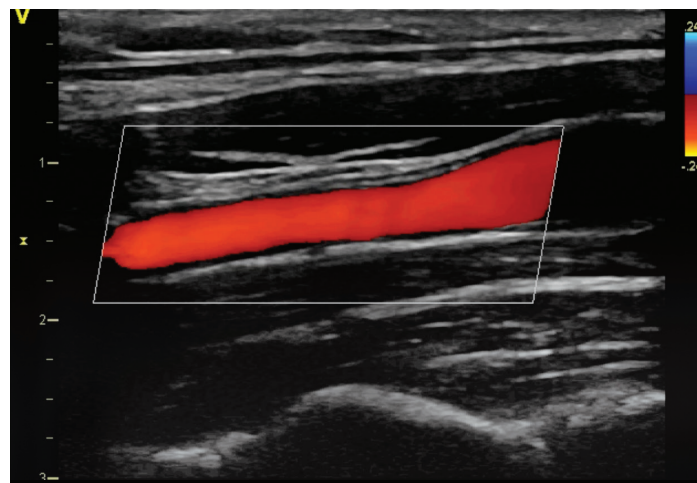
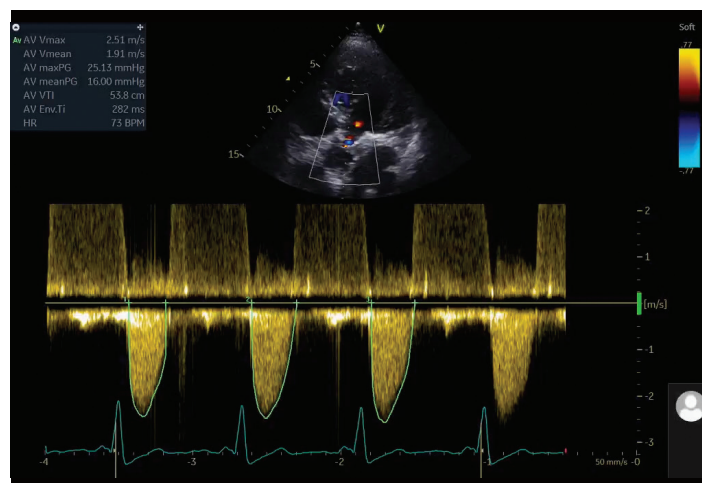
A feature-rich system with established Vivid software, the T8 boosts its cardiac imaging capabilities with advanced quantitative tools.

- **Cardiac Auto Doppler** – This artificial intelligence-based tool provides Doppler measurements over all heart cycles for the most common parameters, supporting consistent results and potentially saving time in both adult and pediatric TTE and TEE studies.
- **Tissue Velocity Imaging** captures dynamic information from moving heart tissue to quantify left ventricular function.
- **AutoEF<sup>®</sup> 2.0** automatically assesses left ventricular ejection fraction using an automated, speckle-tracking ROI tool.
- **SmartStress<sup>®</sup>** automatically adjusts settings to help enhance workflow, reproducibility, and diagnostic confidence.
- **Complete cardiac transducer selection** includes 3Sc-RS, 6S-RS, 6Tc-RS, 9T-RS, 12S-RS and P2D-RS transducers.

## Share services freely.

The flexible Vivid T8 delivers exceptional shared service image quality, with options to customize the system to your facility's needs.

- **Auto IMT<sup>®</sup>** provides automatic edge detection for intima-media thickness and auto-completes required measurements.
- **LOGIQ<sup>™</sup> View<sup>®</sup>** increases the field of view to image large organs that typically can't be seen in a single image.
- **B-Flow<sup>®</sup>** provides advanced spatial and temporal resolution to help assess blood flow and vessel wall structure without the limitations of Doppler.
- **Blood Flow Imaging<sup>®</sup>** helps enhance visualization of blood flow dynamics using a unique signal-processing algorithm.
- **Versatile shared service transducer selection** includes 4C-RS, 8C-RS, E8C-RS, L8-18i-RS, 9L-RS, 12L-RS and L6-12-RS transducers.



## The Vivid T8 Service Package

GE Healthcare continually develops innovative programs that evolve with customer needs. Today, GE Healthcare launches an innovative offering based on enhanced service and reduced total cost of ownership.

### With 3 Years of Coverage

1 year standard warranty

2 additional years of service coverage<sup>2</sup>

- On-site corrective maintenance (labor and necessary spare parts)
- 1 corrective standard probe per year in case of failure (excluding TEE probe)
- Remote service support<sup>3</sup> via InSite™ ExC (remote diagnosis, remote file transfer, console control sharing, remote software download, remote software reload, e-PAT (probe assessment tool))

### Enable smarter outcomes with smarter technology.

InSite is GE Healthcare's service technology, enabling monitoring, real-time application support, remote problem diagnosis, and fast equipment repair for more uptime.

## Security

**Vivid T8 is built and configured for reliability and security.**

**LDAP** – Help ensure patient data safety with Lightweight Directory Access Protocol, which allows your IT team to maintain greater control of who's in the system, reducing the risk of breaches.

**Configurable system password** – There are fully configurable user log-on passwords and internal passwords that can meet your IT department's requirements regarding security strength.

**Disk encryption** of the drive, which contains patient archive and images, helps ensure safety and privacy of the data, even in case of theft.

**Windows® 10 Operating System** with application whitelisting to prevent unauthorized programs from running and potentially harming the scanner.

## Connectivity

**Pediatric DICOM® SR support\*** – Pediatric measurements sent by SR automatically populate the pediatric report on the receiving side for fast, accurate review elsewhere.

**Enhanced support for cardiac and vascular DICOM SR\*,** including user defined measurements.

**Enhanced DICOM review** – Accelerate reviewing and reporting by using contrast, brightness and zoom/pan controls to optimize DICOM images.

**Tricefy® Uplink\*** – Expedite uploading of images and patient data to Tricefy Cloud – a long-term archive that enables image sharing with colleagues or patients.

**Raw data transfer** – User selectable raw data file transfer in DICOM® environment.



\* Optional

<sup>1</sup> The system has been tested for use in conditions similar to indoor environments. Use is restricted to environmental properties described in the user manual. Please contact your GE Healthcare sales representative for detailed information.

<sup>2</sup> Conditions for additional service coverage may vary. Contact your local GE Representative to get the conditions valid for your country.

<sup>3</sup> InSite functions requires a high-speed direct Internet connection and depends on regional availability and speed of connection.

© 2018 General Electric Company. All rights reserved.

General Electric Company reserves the right to make changes in specifications and features shown herein, or discontinue the product described at any time without notice or obligation. Contact your GE Healthcare representative for the most current information. GE, the GE Monogram, Vivid, LOGIQ and InSite are trademarks of General Electric Company. GE Healthcare, a division of General Electric Company. GE Medical Systems, Inc., doing business as GE Healthcare. Tricefy is a trademark of Trice Imaging, Inc. All third party trademarks are the property of their respective owners.

JB58683XX

ULTC-0306-12.18-EN-US