

TOMORROW TODAY

# SIGNA™ Explorer

Fueled by SIGNA™Works

[gehealthcare.com/mr](http://gehealthcare.com/mr)



SIGNA  
Explorer



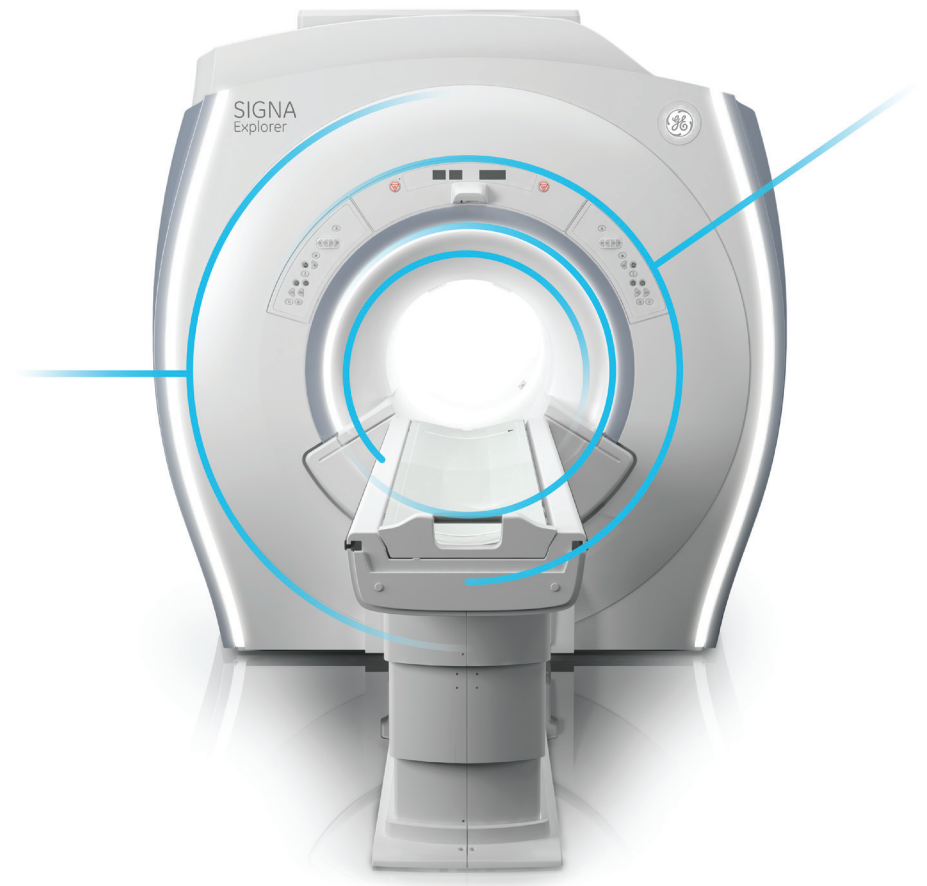
# 1.5T

## Outstanding performance

Today's healthcare challenges are growing and becoming more specific to individual patient needs. As a result, there has been a shift in the need for outcomes-based technology that can address not just specific clinical needs, but operational and financial needs as well. For challenges like these, you need SIGNA™ Explorer, a premium, 60 cm 1.5T system.

Fueled by our SIGNA™Works platform, SIGNA™ Explorer offers exceptional image quality, high throughput, increased patient comfort and a powerful, yet simplified user-centric operation.

Take your 1.5T as far as it will go.





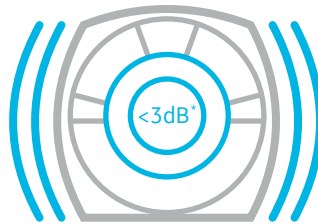




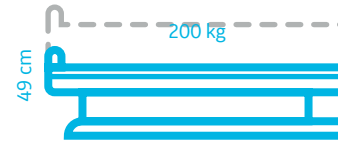
# Patient comfort in practice

From reducing noise levels to lowering the table height and offering free-breathing applications, we carefully thought through the entire patient experience to find opportunities for improvement.

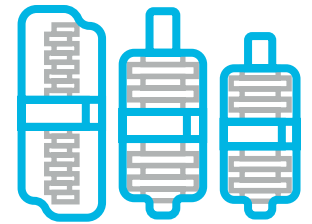
Combining advancements in design, technology and applications, SIGNA™ Explorer sets a new standard for patient comfort.



SilentScan reduces noise to near ambient levels (< 3dB\*)



Low table height gives patients easy access



16-channel Flex Coil Suite accommodates a wide range of body types

\* Above ambient levels; sound measured at the isocenter of the bore.

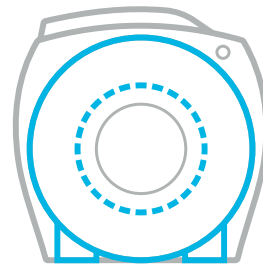
SIGNA  
Explorer



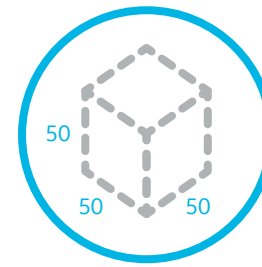
# Built around our modern design magnet

Through the combination of our modern design magnet and high-performance reconstruction speeds, SIGNA™ Explorer makes it easy to produce uniform, high-quality images.

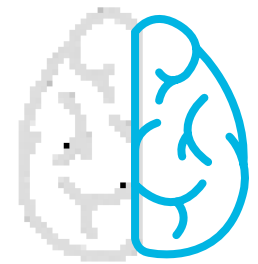
- | High-performance reconstruction allows for everyday use of HyperSense
- | In-line processing automates advanced post-processing techniques



Includes the same modern design magnet that's in our wide bore systems



50 x 50 x 50 cm FOV for off-center oncology and fat saturation challenges

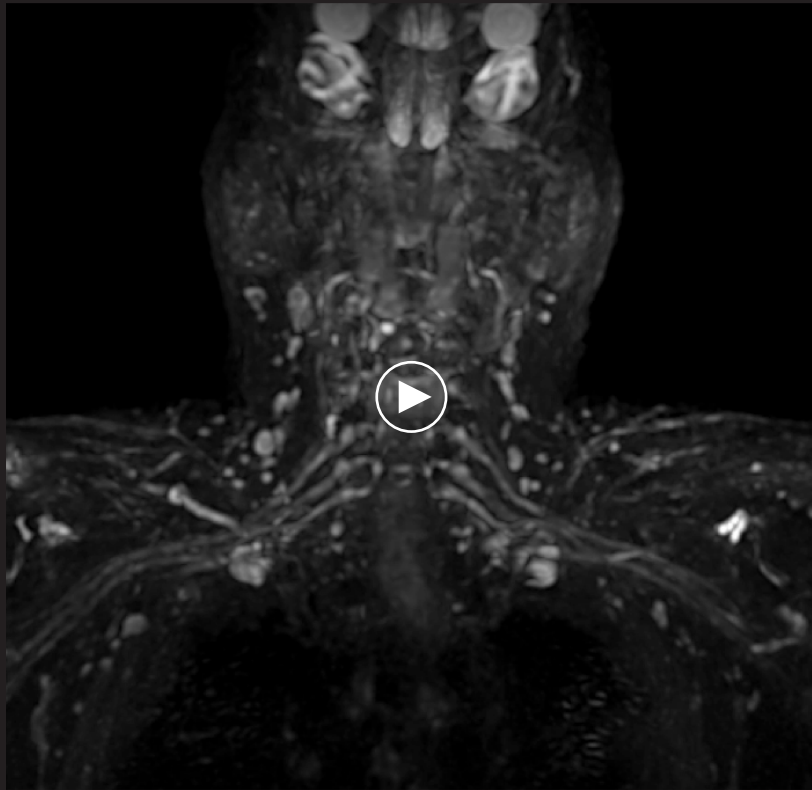


Optical RF technology provides a high signal-to-noise ratio for improved image quality



## With great speed comes great clarity

Image processing speeds play an important role in productivity and throughput. SIGNA™ Explorer includes two accelerating techniques, HyperSense and HyperCube, which provide astonishing imaging with remarkable speed. Used together with a high-performance reconstruction engine, these technologies enable advanced imaging protocols in routine exam slots.



HyperSense with HyperCube

HyperSense



Utilizes proprietary compressed sensing technology for up to 50 percent reduction in scan time while maintaining resolution\*

HyperCube



Selective excitation for high spatial resolutions and fast scan times

HyperSense with HyperCube



Use these two technologies together for up to 8x faster scan times\*

\* Compared to conventional imaging..

# Fueling the future of MR

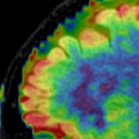
SIGNA™Works redefines productivity and drives your imaging to the next level with the standard applications included in BodyWorks, CVWorks, NeuroWorks, OncoWorks, OrthoWorks and PaedWorks. Additional innovative applications allow you to expand your areas of expertise even further with HyperWorks, ImageWorks, SilentWorks and 3D ViosWorks.

This groundbreaking application portfolio enhances the capabilities of SIGNA™ Explorer. You will experience more accurate and consistent image quality as well as reduced scan times and faster throughput. In addition to clinical and operational improvements, you can expect higher patient satisfaction with silent, free-breathing, contrast-free and needle-free applications.

Learn more about SIGNA™Works



Achieve high-resolution, motion-insensitive images with 2D PROPELLER and 3D PROMO and distortion-free diffusion images with DWI PROPELLER.



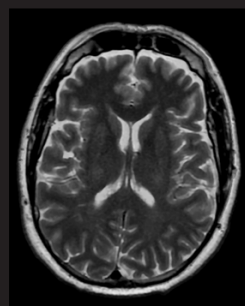


# NeuroWorks

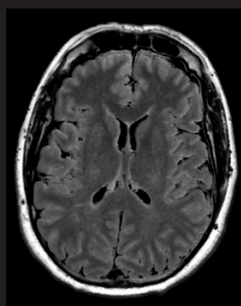
Deliver multiple contrasts in a single scan with MAGiC, reducing scan time by up to 50 percent compared to acquiring all contrasts separately.

| Scans up to eight contrasts in one five-and-a-half-minute scan.

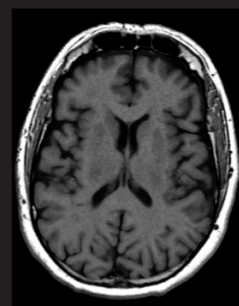
| Allows you to change the contrast after acquisition.



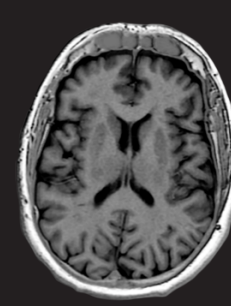
T2



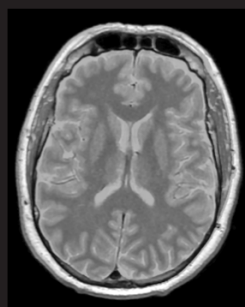
T2 FLAIR\*



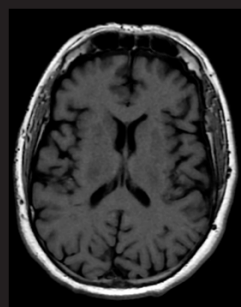
T1



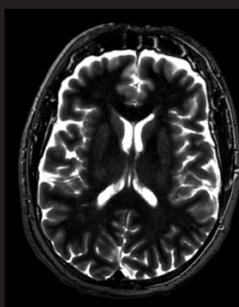
PSIR



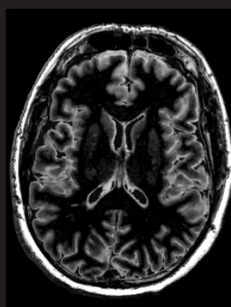
PD



T1 FLAIR



STIR



DIR

MAGiC



\* It is recommended to acquire conventional T2 FLAIR images in addition to MAGiC.

# NeuroWorks

See robust, homogenous fat/water separation even in difficult-to-scan areas using a 2-point Dixon technique with Fast Spin Echo (FSE) Flex.

- Generates two series of images in a single scan, one with fat suppression and one without.

- | Acquires multiple contrasts in a single scan, reducing the need for multiple acquisitions.

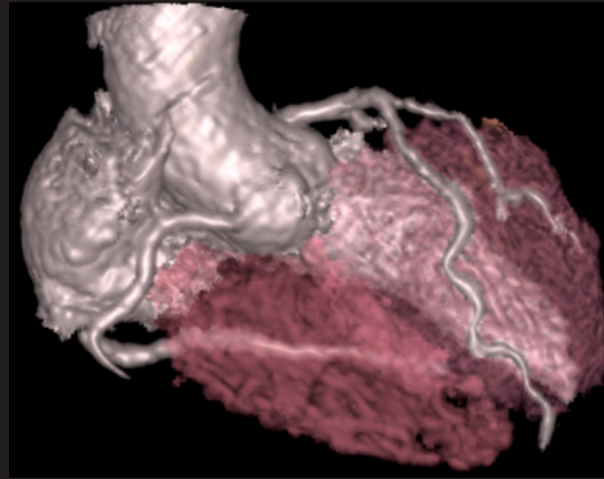


Cervical spine  
Single scan Sagittal T2 FSE Flex  
Water, fat, in-phase and out-of-phase

# CVWorks

Intuitive cardiac techniques that adapt to different patient types. Assess morphology, flow, function and tissue viability and gain crucial insights into vascular structure and flow dynamics.

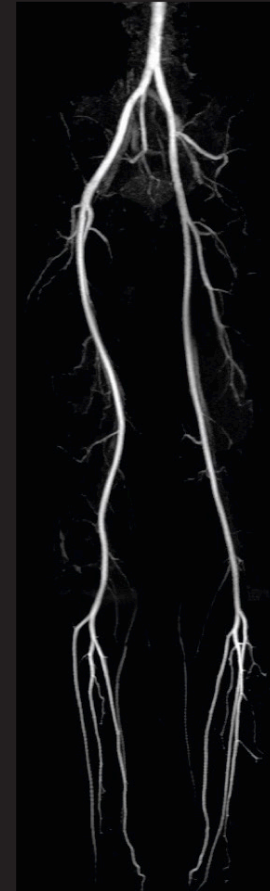
Non-invasively image coronary arteries and evaluate vascular structures with 3D Heart and visualize blood flow in diverse anatomies without gadolinium with Inhance DeltaFlow.



## 3D Heart



Renal arteries  
Inhance



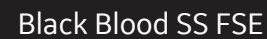
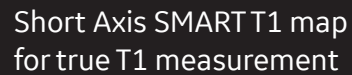
## Inhance DeltaFlow

### 3 stations



# CVWorks

Quantify T1, T2 and T2\* values as well as generate high-resolution anatomical data sets and assess tissue viability.



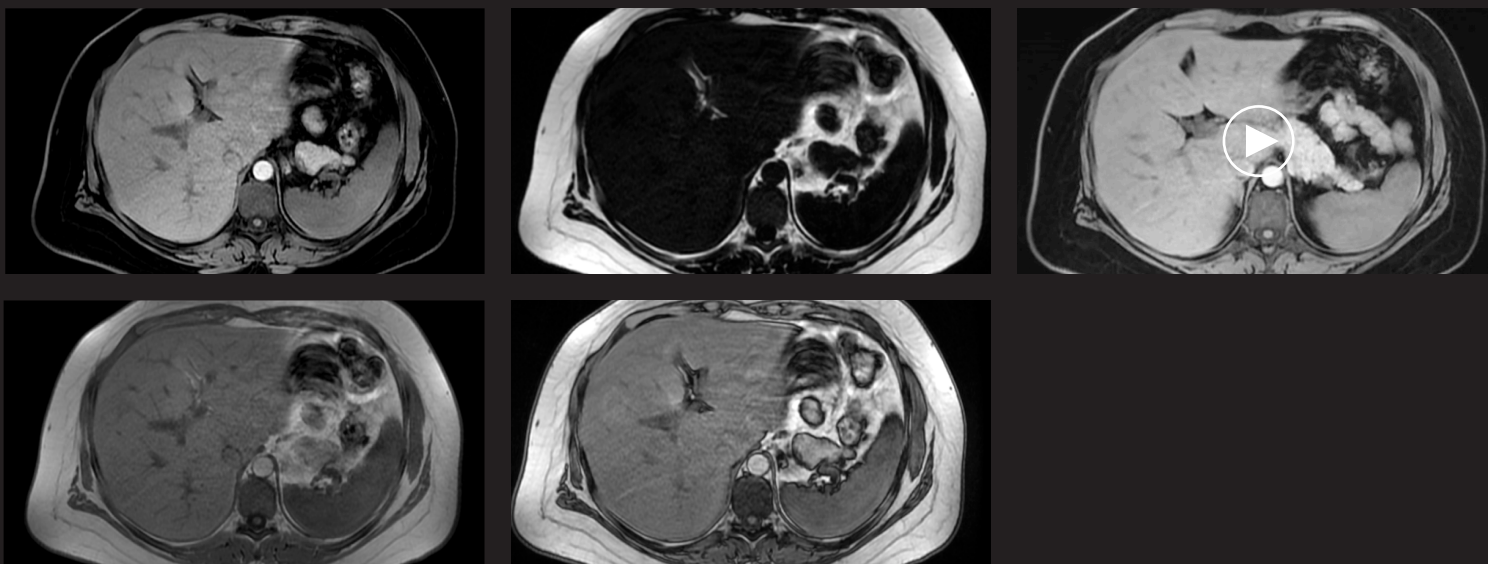
# BodyWorks

Images whole-body, abdominal and pelvic anatomy with speed and flexibility.

Reduce respiratory motion for more accurate abdominal studies with Turbo LAVA.

| Allow patients to breathe freely during dynamic multi-phase imaging.

| Free-breathing dynamic scans with Auto Navigator and Turbo mode reduces scan time by up to 50 percent.



Free-breathing, Auto-navigated liver imaging  
Axial Turbo LAVA Flex

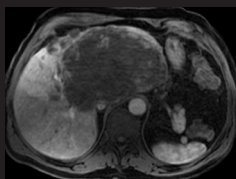


# BodyWorks

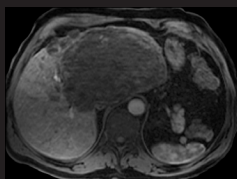
Image the entire liver, prostate or breast in less than three-second intervals with DISCO.

| 3D images meet the challenge of capturing multiple dynamic phases over time.

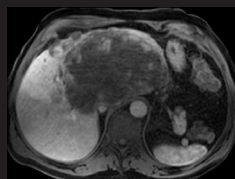
| Compatible with Auto Navigator for free-breathing dynamic scans.



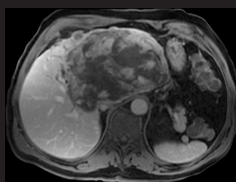
Phase 1



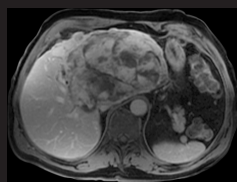
Phase 2  
7-sec delay



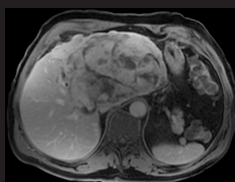
Phase 3  
14-sec delay



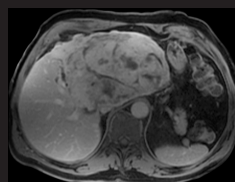
Phase 4  
54-sec delay



Phase 5  
90-sec delay

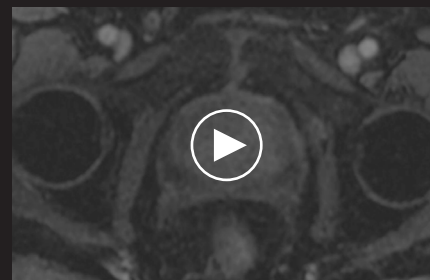


Phase 6  
200-sec delay



Phase 7  
270-sec delay

Liver imaging  
DISCO  
7 sec per phase

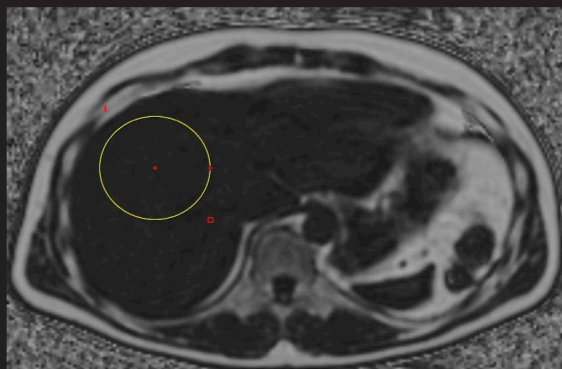


Prostate imaging  
DISCO  
5 sec per phase

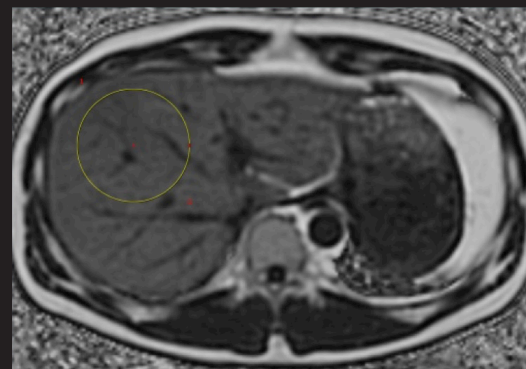




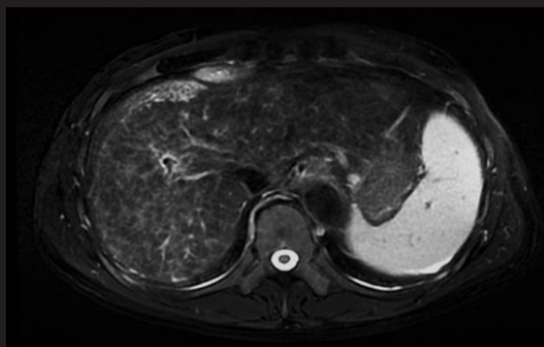
Non-invasively identify variations in liver tissue stiffness with MR Touch in under 15 minutes.



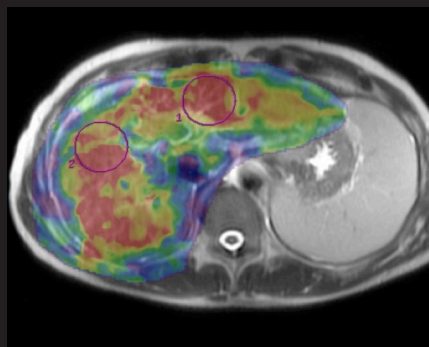
Normal liver  
3D IDEAL IQ / quantitative fat-fraction



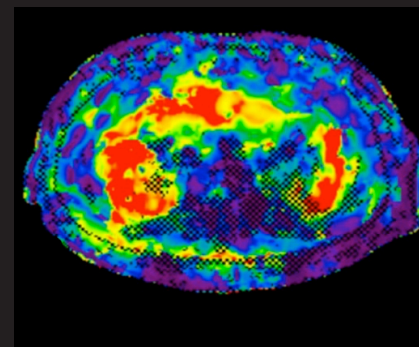
Fatty liver  
3D IDEAL IQ / quantitative fat-fraction



## Axial T2 FatSat PROPELLER



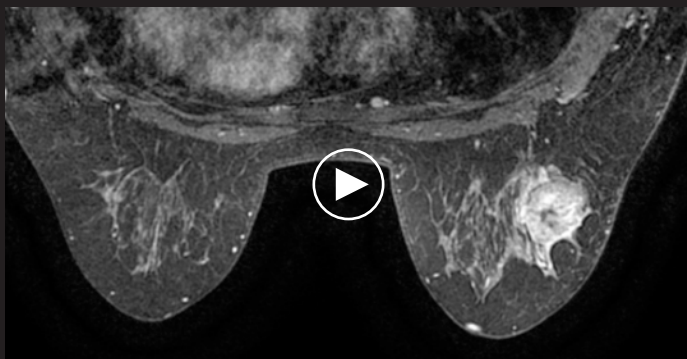
## Fusion: Elastogram and Axial T2 MR Touch



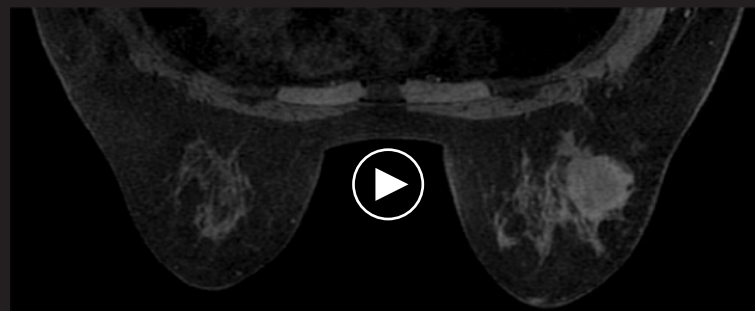
Hepatic cirrhosis  
Elastogram MR Touch

# BodyWorks

See excellent bilateral dynamic contrast breast imaging with high spatial and temporal resolution when you use VIBRANT.



Dynamic VIBRANT  
1:00 min (5 phases)



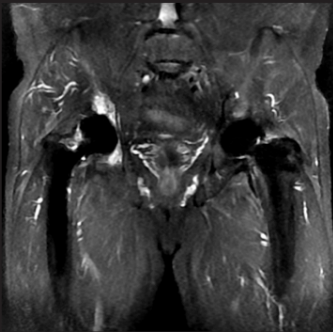
High-resolution Axial VIBRANT  
FOV 34, 1 mm



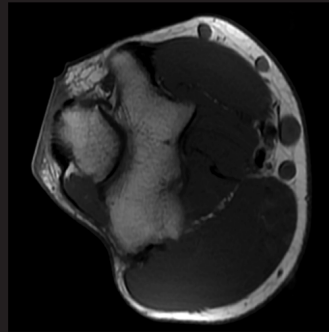
# OrthoWorks

This extensive library of imaging techniques enables you to image bone, joint and soft tissue with remarkable tissue contrast.

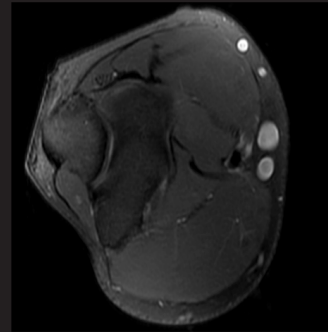
Visualize soft tissues and bone near MR Conditional implants with MAVRIC SL.



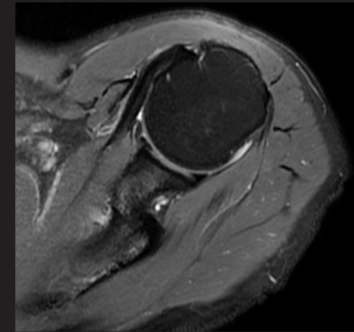
Coronal STIR MAVRIC SL



Axial T1

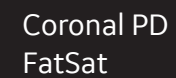
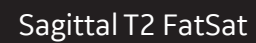


## Axial PD FatSat



Axial T2 FRFSE FatSat

- | T1-weighting capability for pre- and post-Gd contrast enhancement.



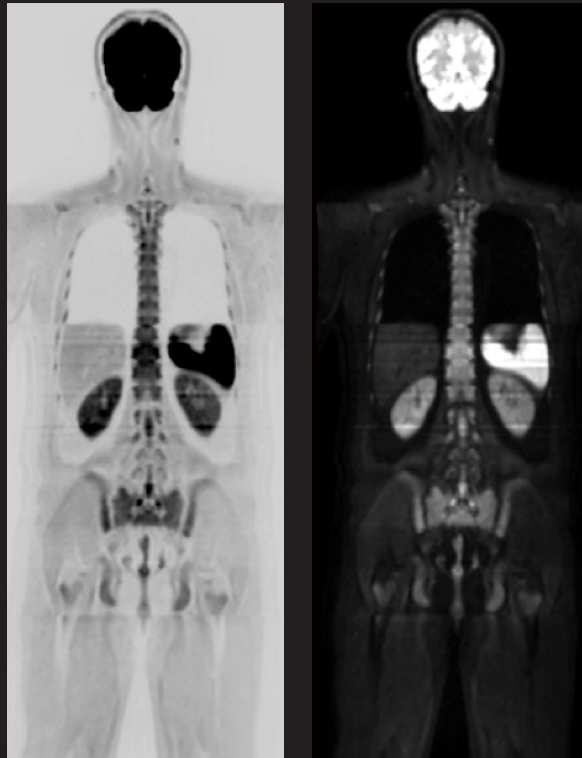


# OncoWorks

A collection of techniques for capturing anatomic and morphologic data to enable oncological assessment of anatomy.

Acquire diffusion images with a high signal-to-noise ratio in short acquisition times with eDWI.

| Decrease overall exam sequences and time.



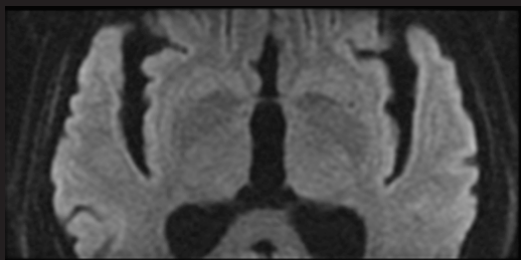
Whole-body diffusion  
b50/b700



- Reduces motion contamination outside the region of interest.

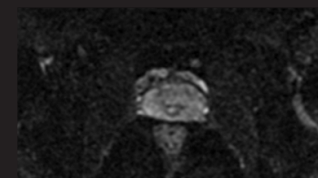
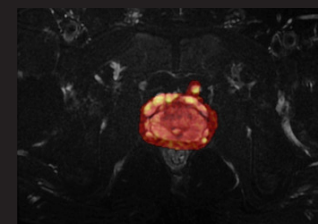


## Axial FOCUS DWI



## Spine Tractography

### Axial DTI FOCUS DWI

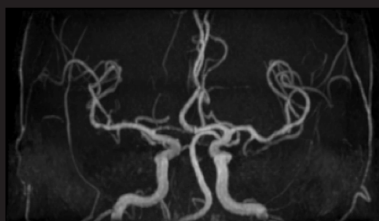
Prostate  
Axial FOCUS DWI

### Prostate Axial T2 overlay with DWI FOCUS

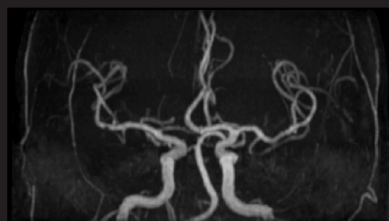
# HyperWorks

Innovative applications that improve image quality, efficiency and workflow to help you perform better than ever before.

Reduce overall scan times without compromising image quality with HyperSense.



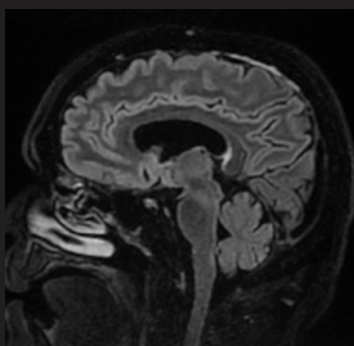
Axial 3D TOF without  
HyperSense  
1.4 mm, 5:15 min



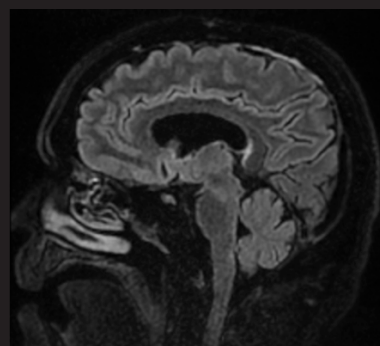
Axial 3D TOF with  
HyperSense  
1.4 mm, 3:18 min



3D MRCP with HyperSense



Sagittal Cube FLAIR  
without HyperSense  
3:41 min



Sagittal Cube FLAIR  
with HyperSense  
2:24 min

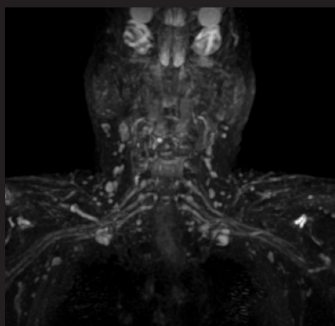


Sagittal HyperCube PD  
FatSat with HyperSense

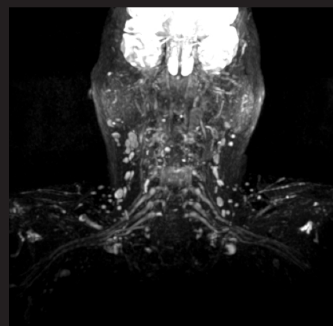


# HyperWorks

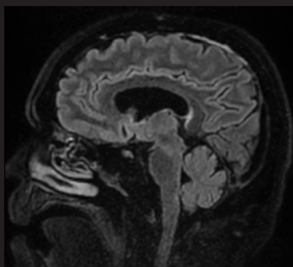
Expand the capabilities of 3D imaging by reducing scan times and minimizing artifacts with HyperCube and reduce scan times even further by simultaneously using HyperSense and HyperCube.



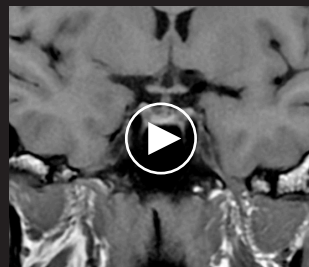
Cube DIR with  
HyperSense



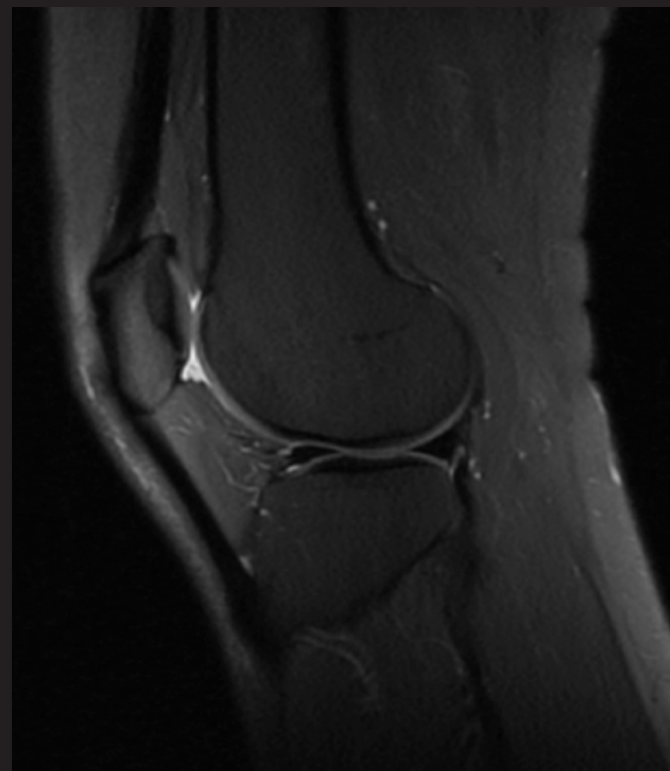
Cube STIR with peripheral  
nerve enhancement  
and HyperSense



Sagittal Cube FLAIR  
with HyperSense



Coronal HyperCube T1



Sagittal Cube PD  
with HyperSense



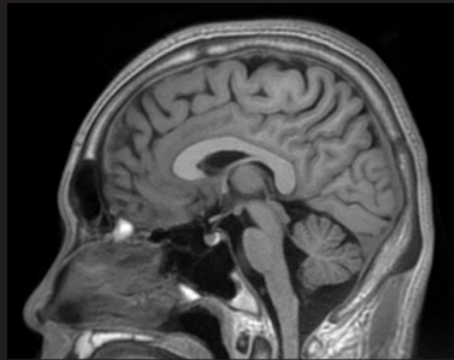


# SilentWorks

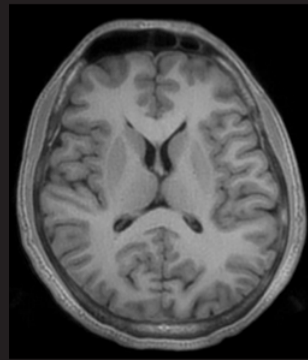
Virtually eliminate the acoustic noise of MR across all anatomies without compromising image quality with SilentScan.

| Use with multiple coils and weightings, including DWI.

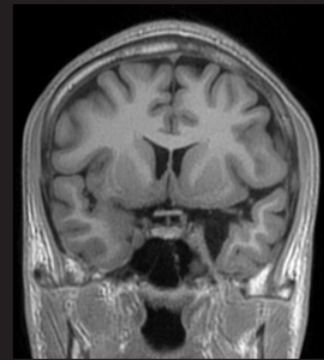
| Reduces artifacts in vasculature structures commonly seen in traditional scans when used with Zero TE techniques.



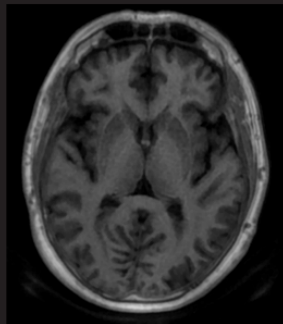
Sagittal reformat  
T1 Silenz



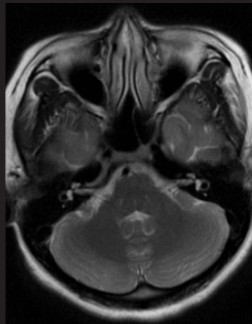
Axial reformat  
T1 Silenz



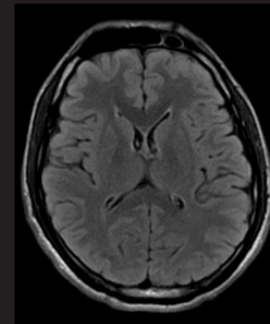
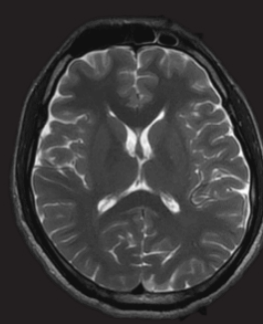
Coronal reformat  
T1 Silenz



Axial 3D T1 Silenz  
Anisotropic



Axial Silent T2 PROPELLER



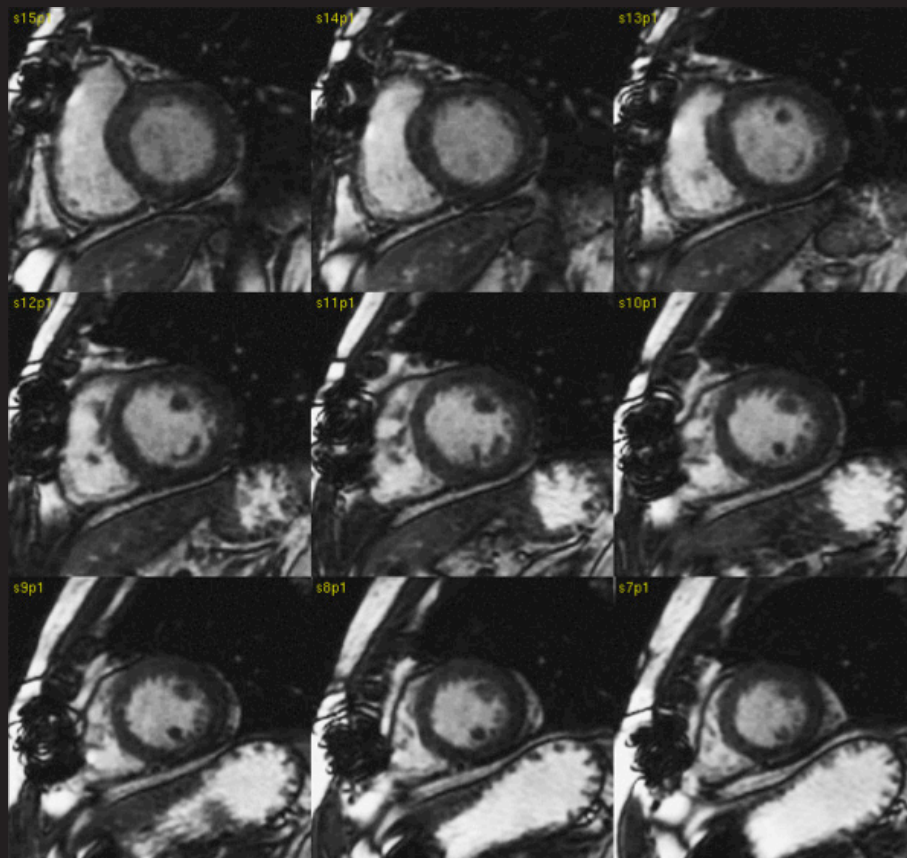
Axial Silent  
T2 FLAIR PROPELLER



# ViosWorks

Visualize and quantify with 3D ViosWorks.

| Increase patient comfort with a quick eight-minute, free-breathing scan.



3D ViosWorks\*



\* Representational images showing ViosWorks capability available on SIGNA™ Explorer.

# ImageWorks

Boost your overall MR performance with ImageWorks applications.

Streamline your analysis workflow of advanced function, flow, tissue characterization, perfusion and tissue mapping of the heart with cmr<sup>42</sup>, a post-processing and visualization solution.

| One-stop processing for cardiac imaging analysis.



cmr<sup>42</sup> post-processing\*

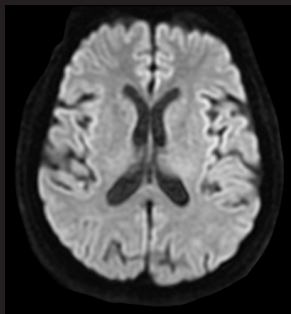


\* Representational images showing cmr<sup>42</sup> capability available on SIGNA™ Explorer.

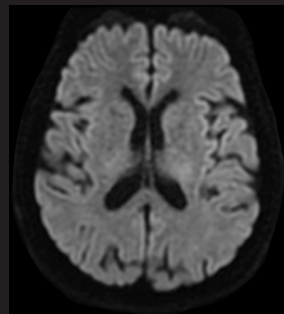
# ImageWorks

Generate multiple synthetic b-values from one DWI scanned series with MAGiC DWI so you can view diffusion contrast changes in real time after acquisition.

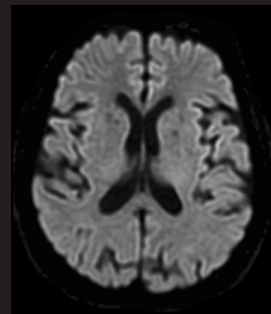
| Increase productivity by enabling higher b-values in shorter scan times.



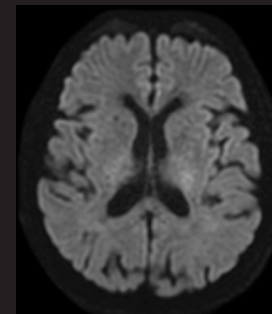
b1000



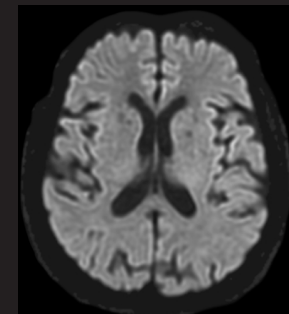
b1400



b1400 Synthetic  
MAGiC DWI



b2000



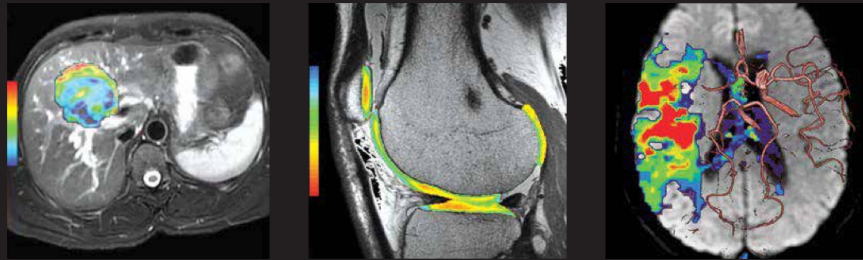
b2000 Synthetic



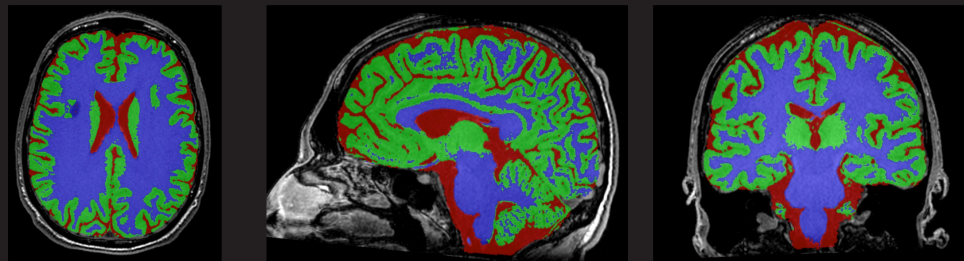
# ImageWorks

Simplify complex exams with READYView, a visualization platform that gives you access to advanced post-processing technology.

Automatically segment and label white matter hyperintensities (WMH) candidates and brain volume with Quantib Brain, which may help accelerate the assessment of brain images over time.



READYView post-processing\*



Segmented white matter, grey matter  
and cerebral spinal fluid  
Quantib Brain BRAVO with reformats

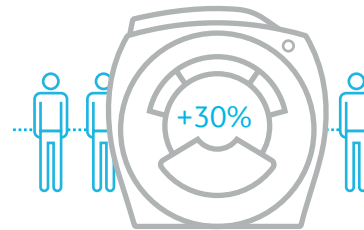


\* Representational images showing READYView capability available on SIGNA™ Explorer.

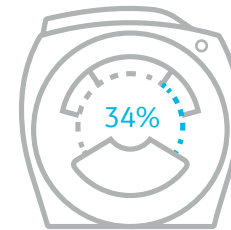


# Enhance your financial performance with operational efficiency

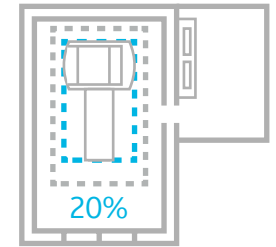
SIGNA™ Explorer has energy-saving, Ecomagination-certified technology and a space-saving footprint. We also provide customizable service and training programs with the ability to upgrade your system through our SIGNA™ Lift program, when the time is right. All of which helps to improve your operational efficiency.



Increases throughput  
by 30 percent to free up  
time for more referrals\*



Ecomagination-certified  
technology provides  
up to 34 percent  
energy savings\*



Designed to use over  
20 percent less space  
with a small 27 m<sup>2</sup>  
footprint for easy siting  
and installation‡

[Learn more about SIGNA™ Lift](#)



\* Under normal operating conditions, when compared to previous generations of MR systems.

‡ Compared to the average siting space required of other 1.5T MR systems.

# Outperform with 1.5T

SIGNA™ Explorer is built to leverage the full potential of our modern design magnet. To do this, we optimized all the surrounding technology. The result is an MR system with an improved patient experience, exceptional imaging performance and access to a wide range of innovative applications.

It's an investment packed with operational efficiencies to ensure you outperform in every aspect of your practice.





GE Healthcare provides transformational medical technologies and services to meet the demand for increased access, enhanced quality and more affordable healthcare around the world. GE (NYSE: GE) works on things that matter – great people and technologies taking on tough challenges.

From medical imaging, software & IT, patient monitoring and diagnostics to drug discovery, biopharmaceutical manufacturing technologies and performance improvement solutions, GE Healthcare helps medical professionals deliver great healthcare to their patients.

Imagination at work

© 2018 General Electric Company – All rights reserved.

GE Healthcare reserves the right to make changes in specifications and features shown herein, or discontinue the product described at any time without notice or obligation. Contact your GE Healthcare representative for the most current information. SIGNA, Continuum, GE and the GE Monogram are trademarks of General Electric Company. GE Healthcare, a division of General Electric Company. GE Medical Systems, Inc., doing business as GE Healthcare.

JB57729XX(1)