

# VOLUSON E6

FLEXIBILITY YOU NEED  
PERFORMANCE YOU REQUIRE

Be confident in your ultrasound – choose the one with a heritage of exceptional performance. The Voluson™ E6 is a versatile ultrasound system offering the superior imaging you need today with the flexibility for when your needs evolve. Your entry into the Expert Series, the Voluson E6 is the perfect choice for a growing practice that demands excellence in patient care.

BT20

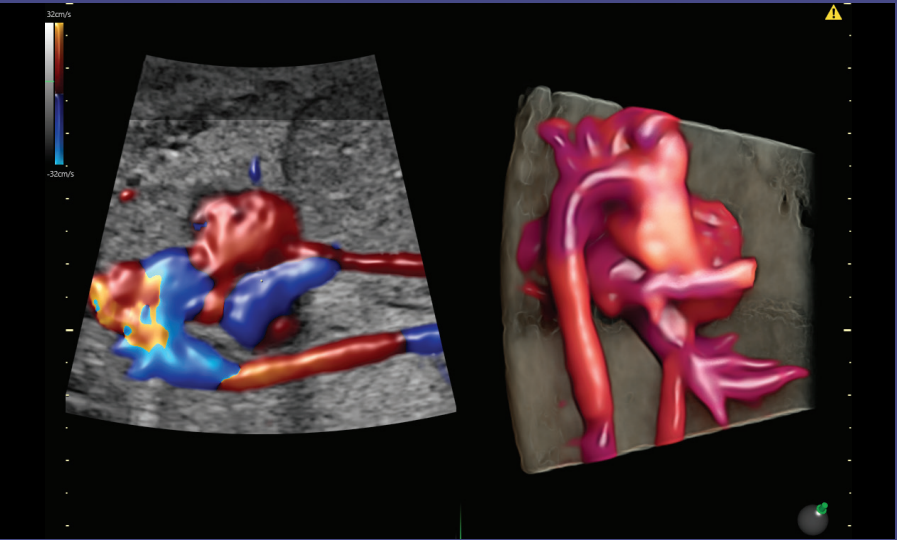




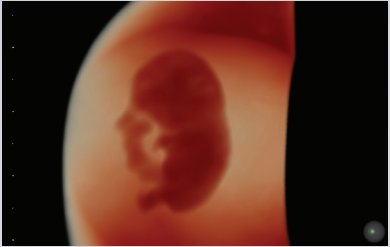
# EXPERIENCE EXPERT LEVEL PERFORMANCE

Take your practice to new heights

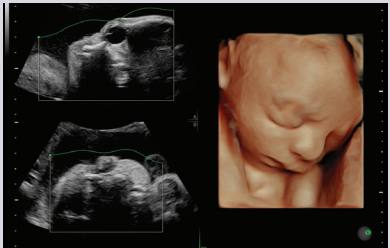
Experience a new level of imaging confidence with the Voluson E6. With even more processing power, the sophisticated **Radiance System Architecture** helps provide exceptional visualization of anatomy for your women's health imaging requirements. With clear, detailed 2D and 3D/4D imaging and color Doppler, the Voluson E6 gives you the flexibility and performance you require.



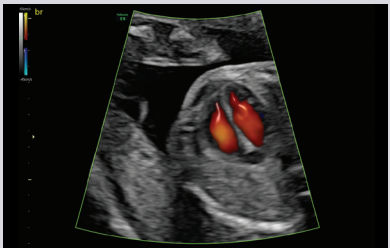
Achieve exceptional tissue and detail resolution with **XDclear™ probe technology C2-9D & C1-6-D** – The combination of single crystal, acoustic amplification, and cool stack technology offers sharp 2D imaging even with difficult to scan patients



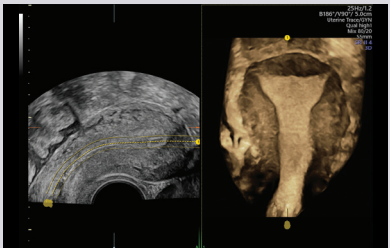
Easily obtain volume images with unprecedented depth and clarity using the **HDlive™** technology suite – An essential problem solving tool for a deeper understanding of relational anatomy and developing structures



Facilitate 3D and 4D rendering by using **SonoRenderlive** – Automated placement of the render line for optimal surface rendering even during fetal movement



Achieve a new standard of color Doppler – **Radiantflow™** delivers easy, fast visualization of blood flow using the amplitude of the Color Doppler signal to enhance the robustness and create a 3D-like appearance

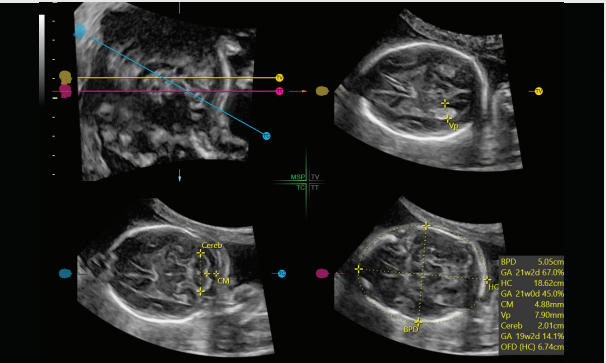


Taking the effort out of 3D with **Uterine Trace** – In 3 simple steps, obtain the coronal plane of the uterus. Links directly to Uterine Classification pictograms for easy documentation of uterine shape

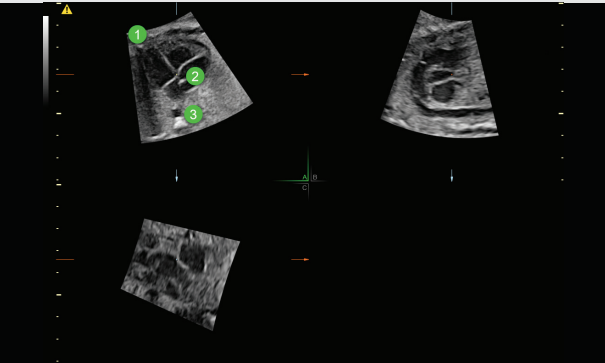
# EFFICIENCY WITHOUT COMPROMISE

Tools that maximize your time – and your expertise

Decrease complexity and increase exam consistency with Voluson's **Sono-automation** technologies

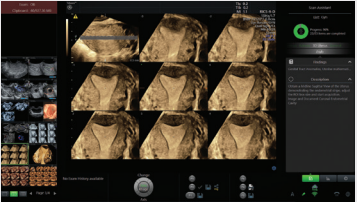


**SonoCNS** – An Edison application using deep learning technology to help properly align and display recommended views plus measurements of the fetal brain. Now 29% faster than previous version\*



Automatically obtain the recommended views of the fetal heart with 3 easy clicks from a single STIC volume using **SonoVCAD™heart** (Sonography-based Volume Computer Aided Display heart)

Balance schedules while increasing patient satisfaction with **Scan Assistant**. This flexible, customizable exam protocol tool helps increase exam consistency and productivity while documenting for quality assurance purposes



Maximize comfort and workflow with a modern ergonomic design – Experience **xTouch** – Intuitive volume navigation for 3D manipulations – X/Y/Z rotations, zoom, MagiCut, HDlive light source, OmniView and more



24% faster boot up time (75 sec.) to get you scanning sooner\*

Designed for maximum security protection, Voluson **SonoDefense** is multiple layers of security to protect your systems from attack. Consisting of six layers, each layer enhances the overall security of your system and patient data with features like **USB defense, Windows® 10 hardening, Whitelisting** and **HD encryption**



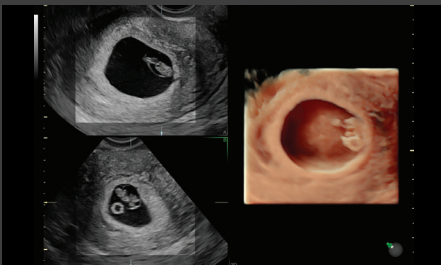
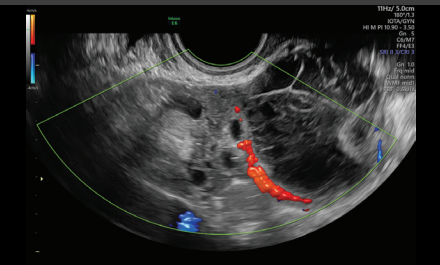
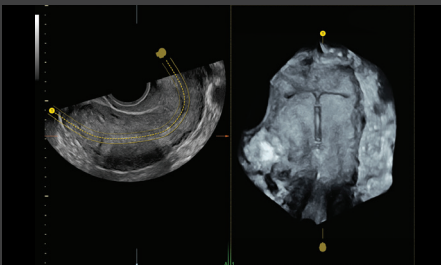
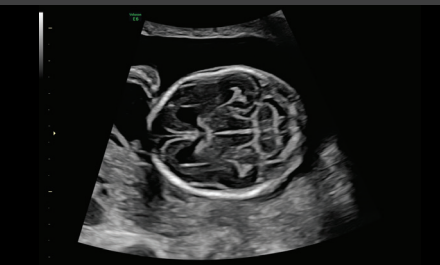
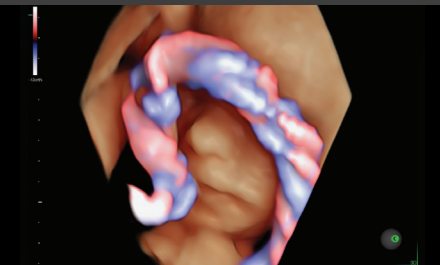
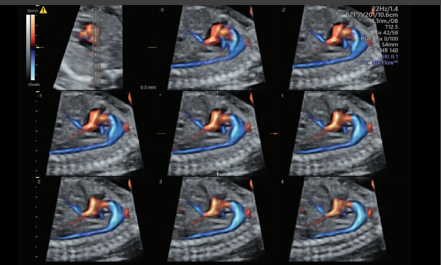
Connect and store encrypted images with colleagues and patients with the help of **ViewPoint™** and **Tricefy™ inside**



Explore **3D Printing** for rapid clinical prototyping, research, and parent bonding. Export files directly from the Voluson ultrasound system to instantly 3D print projected and full mesh data sets. Downloading directly helps save time and reduces complexity versus using external post processing software



\*Compared to BT19 version





## LIKE FAMILY – WE'RE HERE FOR YOU

*Exclusive offerings to enhance your expertise.*

Join **VolusonClub** – The only ultrasound community dedicated to the education and collaboration of women's health providers – Benefits include: Product educational videos, product tips and tricks, white papers, Voluson educational courses and much more

**>29K**  
**members**



A well-maintained Voluson system improves your efficiency and allows you to deliver the best care to your patients. That's why we designed Voluson E6 with digital support features to provide you with peace of mind now...and in the future. Combined with flexible service and financing programs, GE can partner with you to monitor and maintain your systems, ensure quality and compliance, and train and inspire your staff

## Imagination at work

© 2019 General Electric Company – All rights reserved.

GE Healthcare reserves the right to make changes in specifications and features shown herein, or discontinue the product described at any time without notice or obligation. Contact your GE Healthcare representative for the most current information. GE, the GE Monogram, Voluson, HDlive, XDclear, Radiantflow and ViewPoint are trademarks of General Electric Company. Tricefy™ trademarks are registered trademarks of Trice Imaging, Inc. Windows is a registered trademark of Microsoft Corporation. GE Healthcare, a division of General Electric Company. GE Medical Systems, Inc., doing business as GE Healthcare.

August 2019  
JB68869XXe